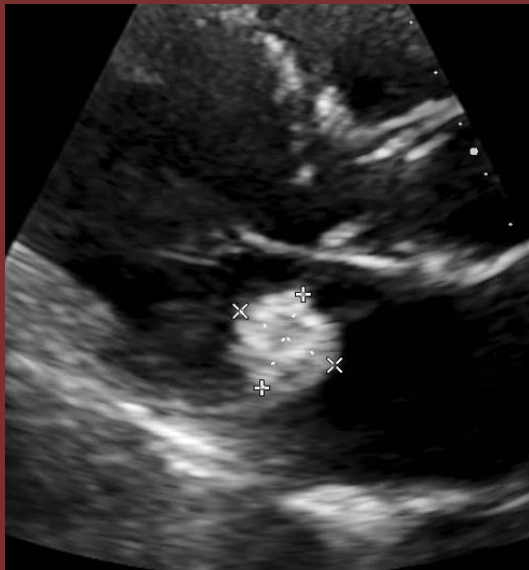
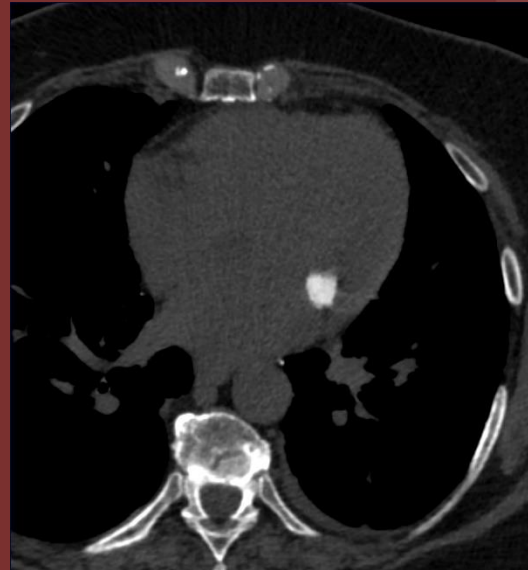


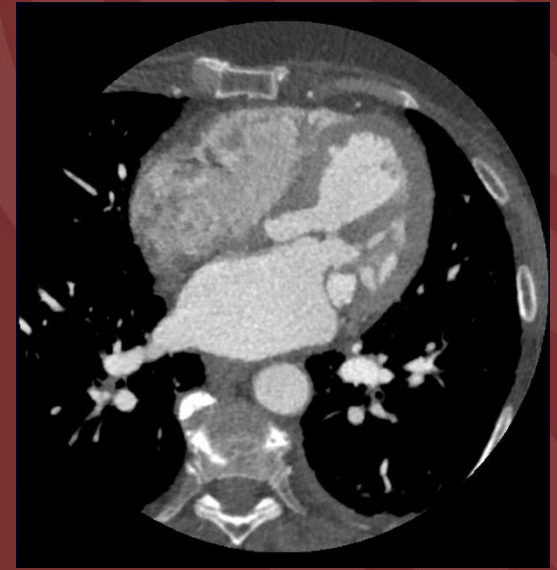
74-year-old with mass seen on echocardiogram



Echocardiogram, 3CH



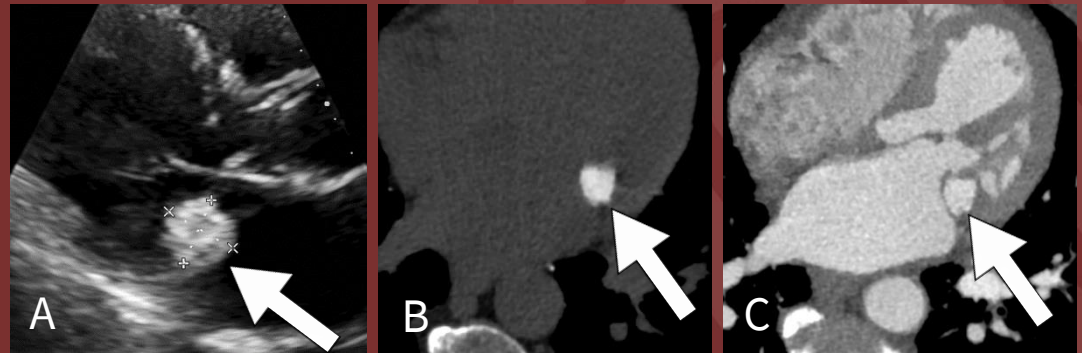
Cardiac CT, noncontrast axial



Cardiac CT, arterial axial

Diagnosis: Caseous mitral annular calcifications (MAC)

- Rare variant of MAC.
- Can mimic neoplasm on echocardiography.
- Can show density similar to CT contrast, but is revealed as calcification in the noncontrast images.
- Can be associated with hypertension and hypercholesterolemia.
- < 0.07% of echocardiography patients.
- On surgery, it has a tooth-paste-like consistency.



A. Echocardiogram showing a hyperechoic mass, which does not appear echogenic enough for an obvious calcification, which can be confusing. B and C. The finding corresponds to a hyperdense rounded structure at the mitral annulus with a density of ~450 HU, similar to contrast density in this case. Because of its density, the lesion blends in with the contrast, almost disappearing.

Robert Bruce, MD; Andrew Nguyen, MD; Pedro V. Staziaki, MD

University of Vermont Medical Center

Reference(s):

Lubarsky L et al, Circulation, 2007, PMID: 17664379. Dingle P et al, J Family Med Prim Care, 2017, PMID: 29302564