

NORTH AMERICAN SOCIETY FOR CARDIOVASCULAR IMAGING

Clinical History: 64 year old male status post CABG. Coronary CT was requested to assess for graft patency

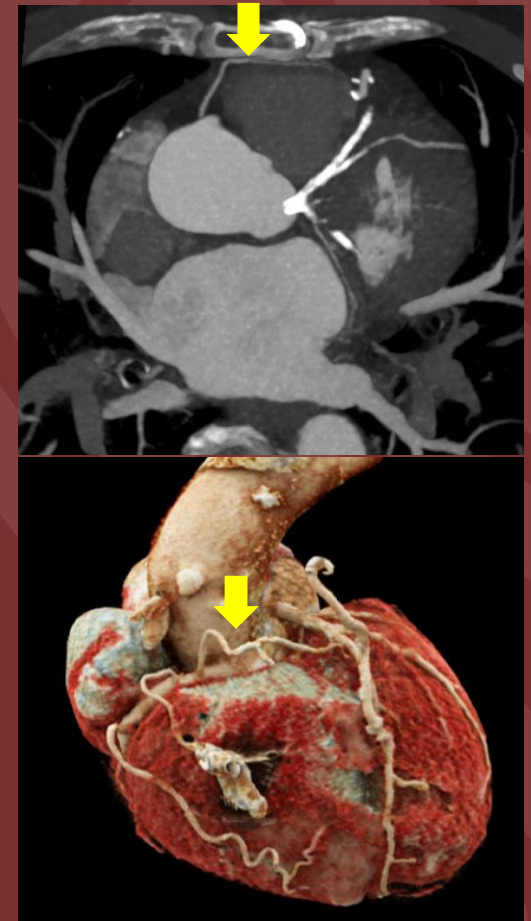


- A. Thick-slab maximum intensity (MIP) projection view of the left anterior descending artery showing an occluded mid segment (arrow)
- B. Axial MIP image demonstrating a prominent conus artery with a pre-pulmonic course giving off collateral supply to the occluded mid LAD segment, consistent with a Type 1 Vieussens' arterial ring.
- C. Heart surface volume rendering reconstruction also demonstrating the collateral vessel

Diagnosis: Vieussens' Arterial Ring

Teaching points:

- Vieussens' arterial ring (VAR), a remnant of the embryonic cono-truncal ring, connects the conus artery and the left anterior descending (LAD) coronary artery and is present in 48% of the population, with multi-detector CT serving as a crucial tool for identifying VAR, particularly as a collateral vessel in the context of occluded coronary arteries.



Jerald S. Lim, MD

St. Luke's Medical Center, Philippines