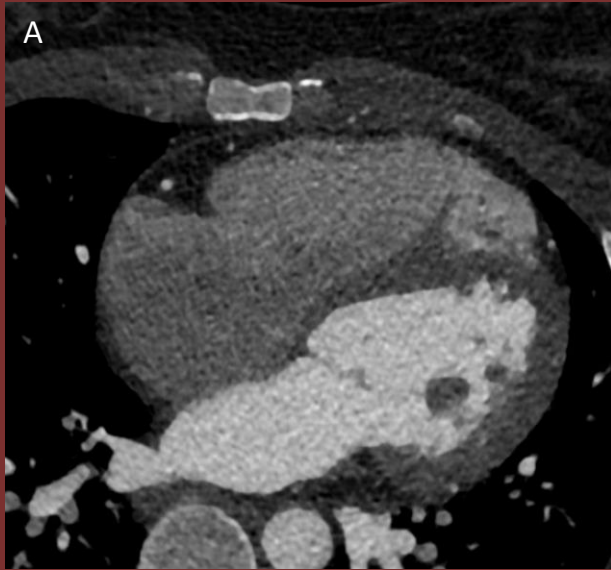
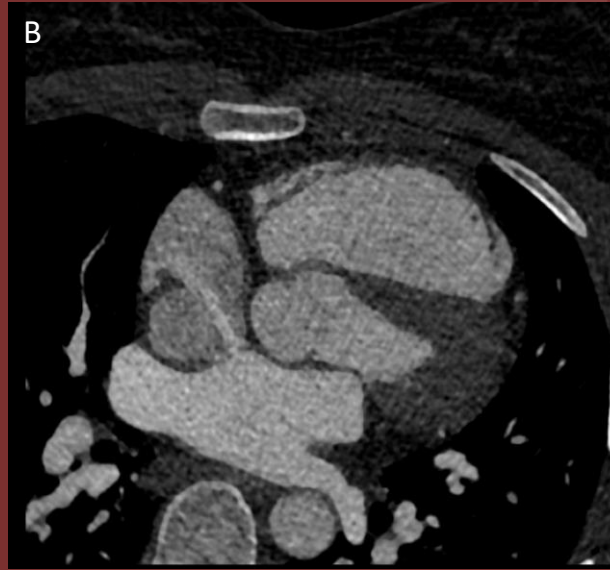


NORTH AMERICAN SOCIETY FOR CARDIOVASCULAR IMAGING

Clinical History: 31 year old female with chest pain and headaches. Initial transthoracic 2D echo evaluation was unremarkable. Coronary CT angiography was requested to rule out coronary artery disease.



Cardiac CT in 4 chamber reformat



Axial CT



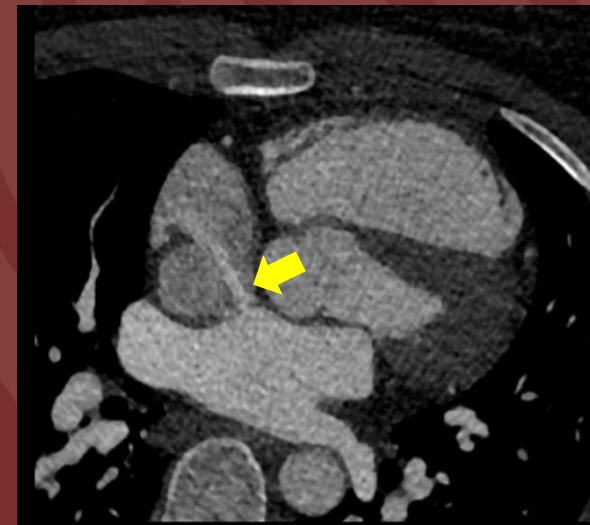
ASC echocardiography

- Axial CT showing an enlarged right atrium and right ventricle
- A linear jet of contrast was seen at the interatrial septum directed towards the right atrium consistent with a secundum type of atrial septal defect
- This was subsequently confirmed in the agitated saline contrast (ASC) echocardiography where microbubbles were detected in the left atrium and left ventricle

Diagnosis: Secundum Atrial Septal Defect

Teaching points:

- Secundum type is the most common atrial septal defect type and is observed in the mid portion of interatrial septum.
- Cardiac CT imaging, with proper scanning and contrast injection protocols, can be a valuable tool in detecting and diagnosing unexpected findings such as congenital anomaly, even after an initial evaluation or screening showed no abnormalities.



Jerald S. Lim, MD

St. Luke's Medical Center, Philippines