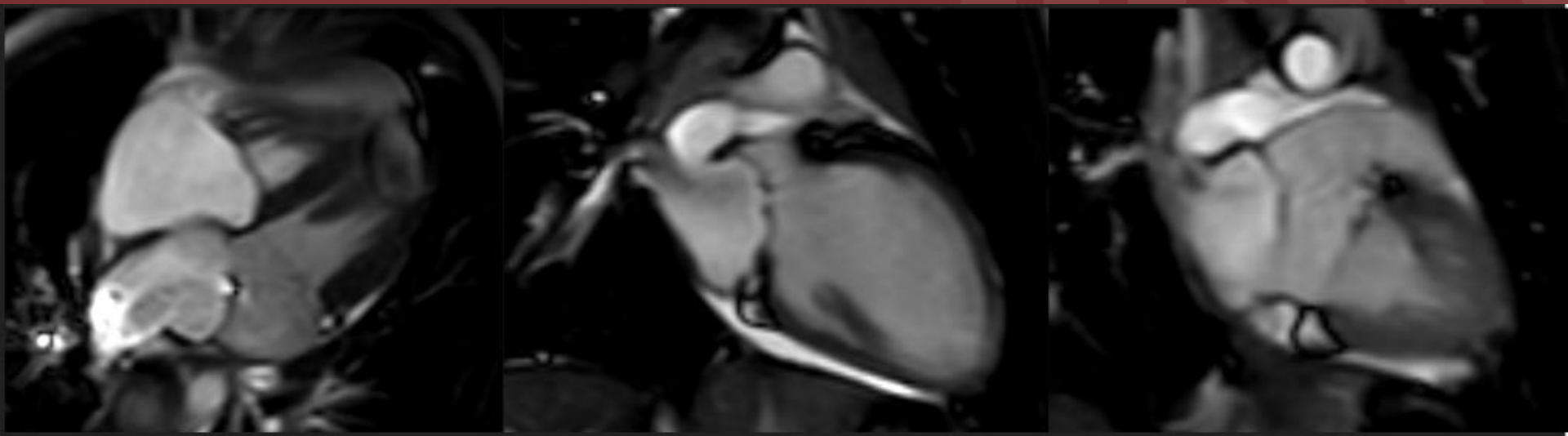


NORTH AMERICAN SOCIETY FOR CARDIOVASCULAR IMAGING

4-year-old female with murmur and symptoms of heart failure



A

B

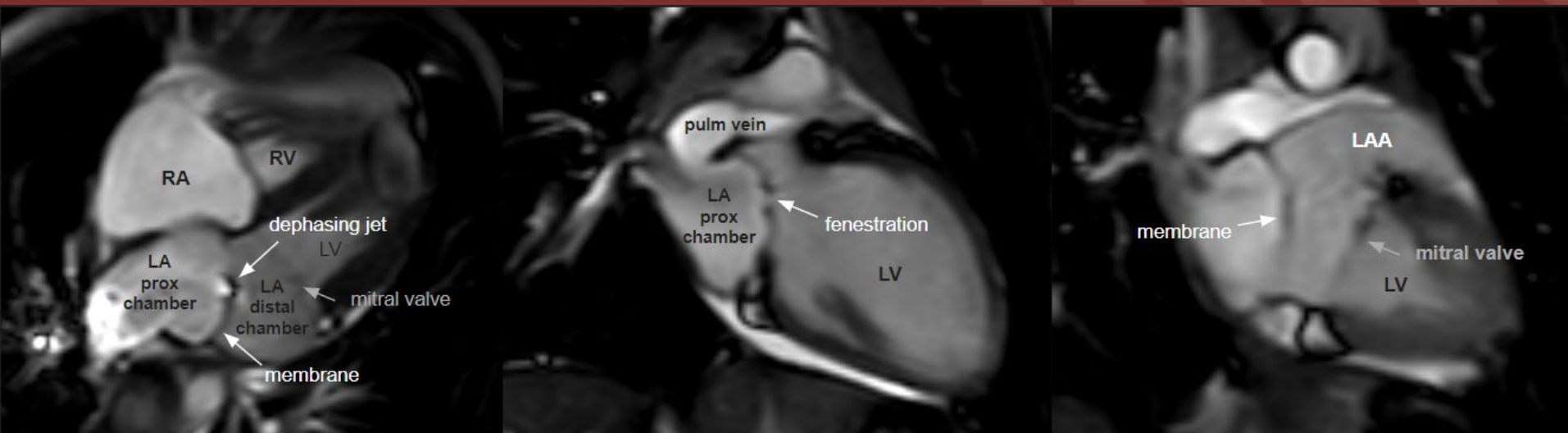
C

Cardiac MR cine images

(A) Horizontal long axis (B) 2 chamber view (C) 2 chamber view (level of LAA)

Diagnosis: COR TRIARIATUM SINISTER (obstructive)

- Fibromuscular membrane dividing the left atrium into superior and inferior chambers.
- *Symptoms:* Mimics mitral stenosis (pulmonary congestion, respiratory distress).
- *Differential diagnosis:* Supramitral membrane (located between the LAA and the mitral valve).
- *Associations:* Atrial septal defect (especially if there is significant restriction of flow or no fenestration), PAPVR, and other congenital malformations.
- **COR TRIARIATUM DEXTER** (right-sided): Mimics right-sided heart failure (increased jugular pressure, ascites, hepatic congestion, peripheral edema). RARE!



Furlani AC, Lazarus MS. Montefiore Medical Center, NY

References:

- Nassar PN, Hamdan RH. Cor Triatriatum Sinistrum: Classification and Imaging Modalities. *Eur J Cardiovasc Med.* 2011 Jan;1(3):84-87.
Niwayama G. Cor triatriatum. *Am Heart J.* 1960 Feb;59:291-317.
Sakamoto I, Matsunaga N, Hayashi K, Ogawa Y, Fukui J. Cine-magnetic resonance imaging of cor triatriatum. *Chest.* 1994 Nov;106(5):1586-9.
Gahide G, Barde S, Francis-Sicre N. Cor triatriatum sinister: a comprehensive anatomical study on computed tomography scan. *J Am Coll Cardiol.* 2009 Jul 28;54(5):487