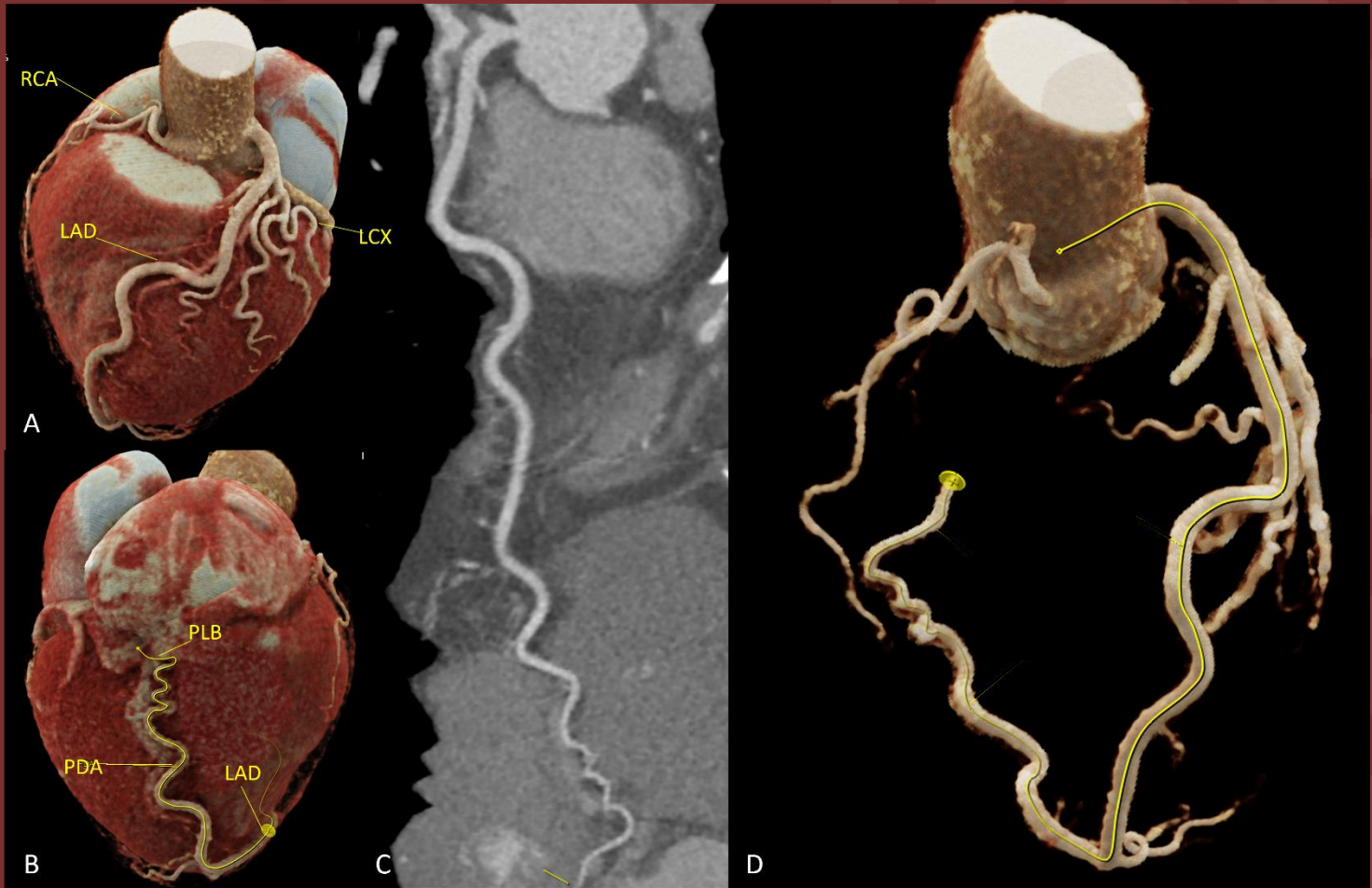


NORTH AMERICAN SOCIETY FOR CARDIOVASCULAR IMAGING

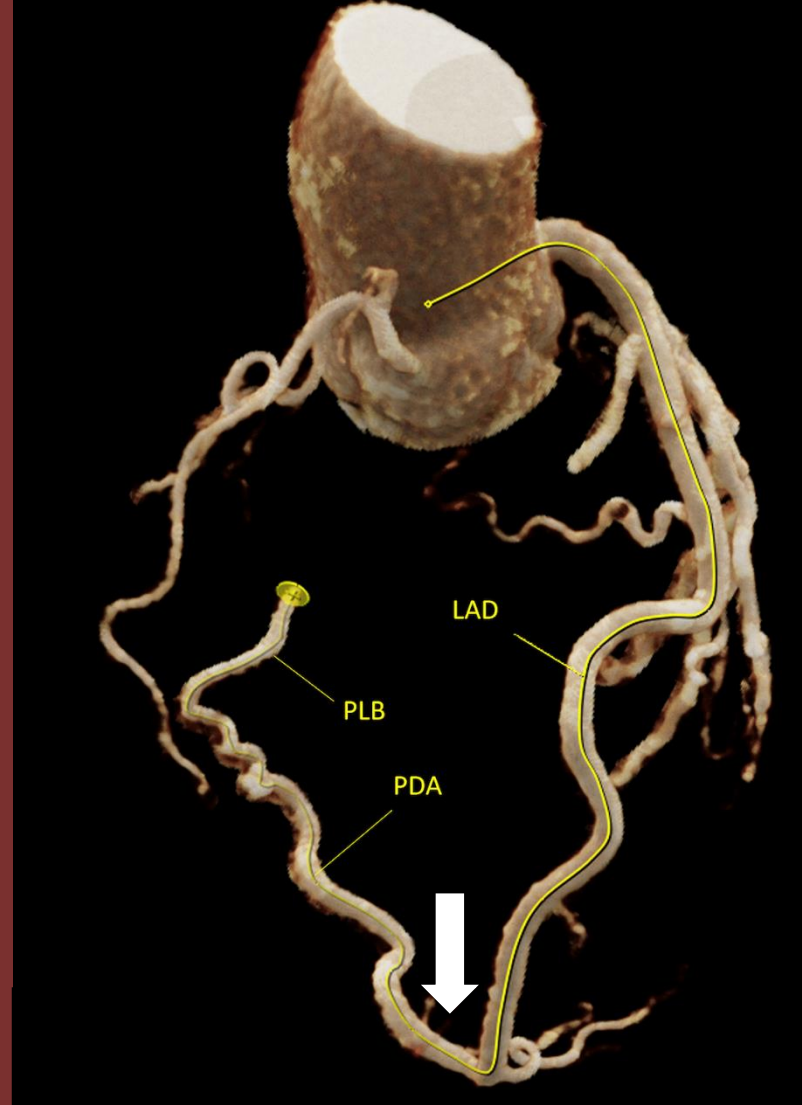
Incidental finding of a CCTA ordered for research purposes



Cinematic rendering of the heart, anterior (A) and posterior (B) views. Multiplanar curved reformat of the LAD (C). Cinematic rendering of the coronary tree (D)

Diagnosis: super dominance

- Rare coronary anomaly¹⁻²
- PDA and PLB arising from the LAD (arrow)
- LAD running in the anterior and posterior interventricular grooves giving origin to a *posterior ascending artery*
- Small-caliber RCA and LCx
- Occlusive CAD affecting a super dominant LAD might have potentially fatal clinical implications



Carlotta Onnis MD, Marly van Assen PhD, Carlo N. De Cecco MD, PhD

Division of Cardiothoracic Imaging - Department of Radiology and
Imaging Sciences- Emory University