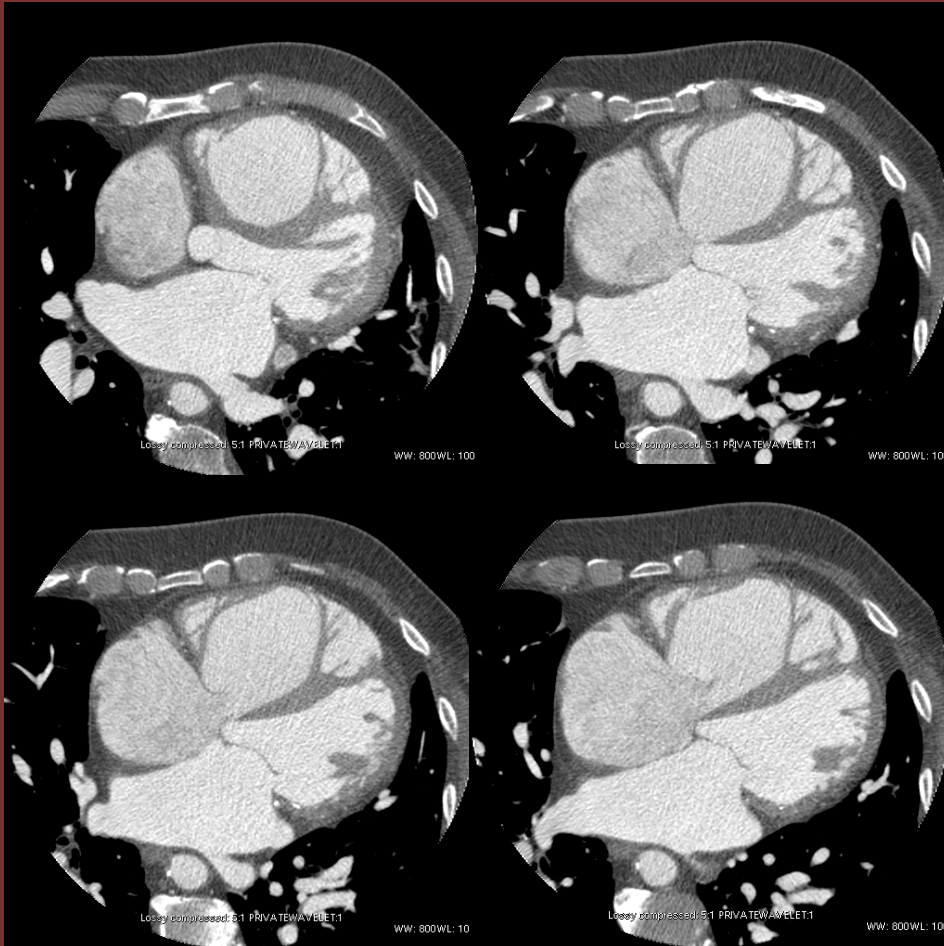


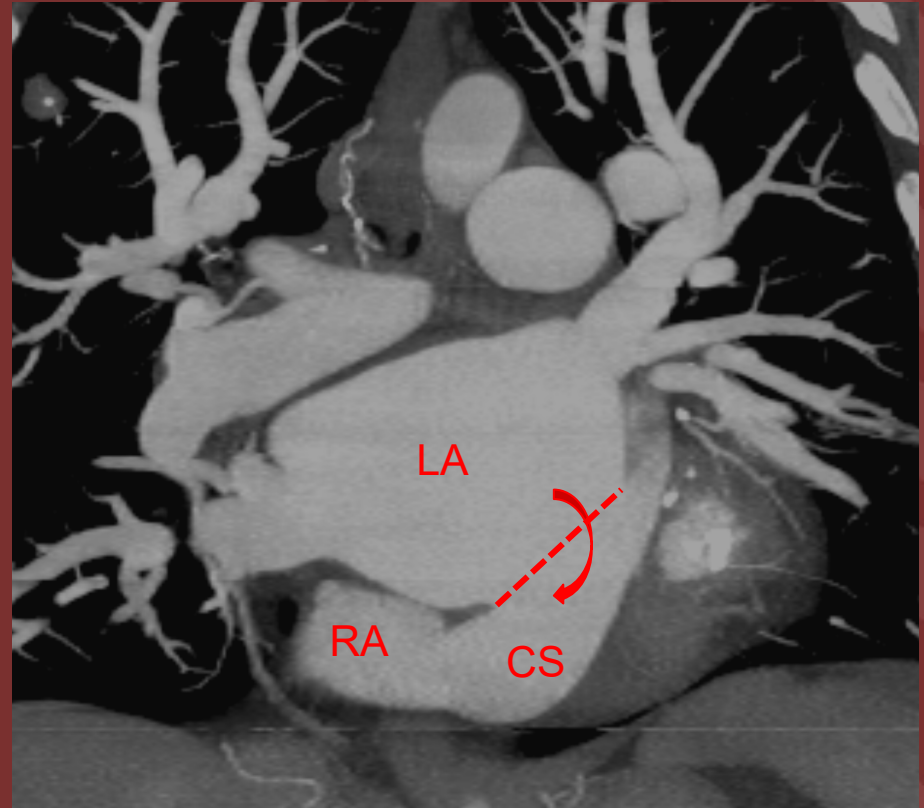
## 54-year-old man with shortness of breath on exertion



Consecutive axial (left) and coronal reformat (right) cardiac CT angiography images

## Diagnosis: Unroofed coronary sinus without persistent left SVC

This congenital abnormality accounts for 1% of atrial septal defects. It results from partial or complete absence of the wall partitioning the coronary sinus from the left atrium. It is commonly associated with a persistent left SVC (63%).



Carole Dennie MD, FRCPC, University of Ottawa Heart Institute

### Reference(s):

1. Shaw SS et al. Imaging of the coronary sinus. Normal anatomy and congenital defects. *RadioGraphics* 2012; 32:991-1008
2. Zhi A et al. CT angiography for diagnosis and subcategorization of unroofed coronary sinus syndrome. *J of Thorac Dis* 2017; 9(10): 3946-3955