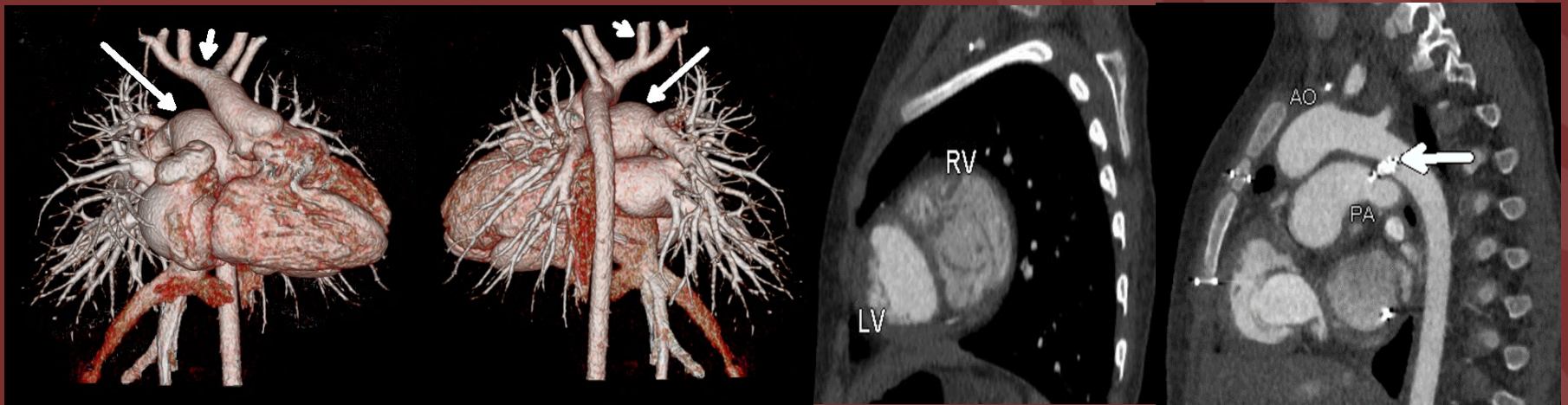


A 5-year-old girl with a rare cyanotic congenital heart defect

Cardiac CT angiogram: Situs solitus, ventricular inversion, anterior aorta

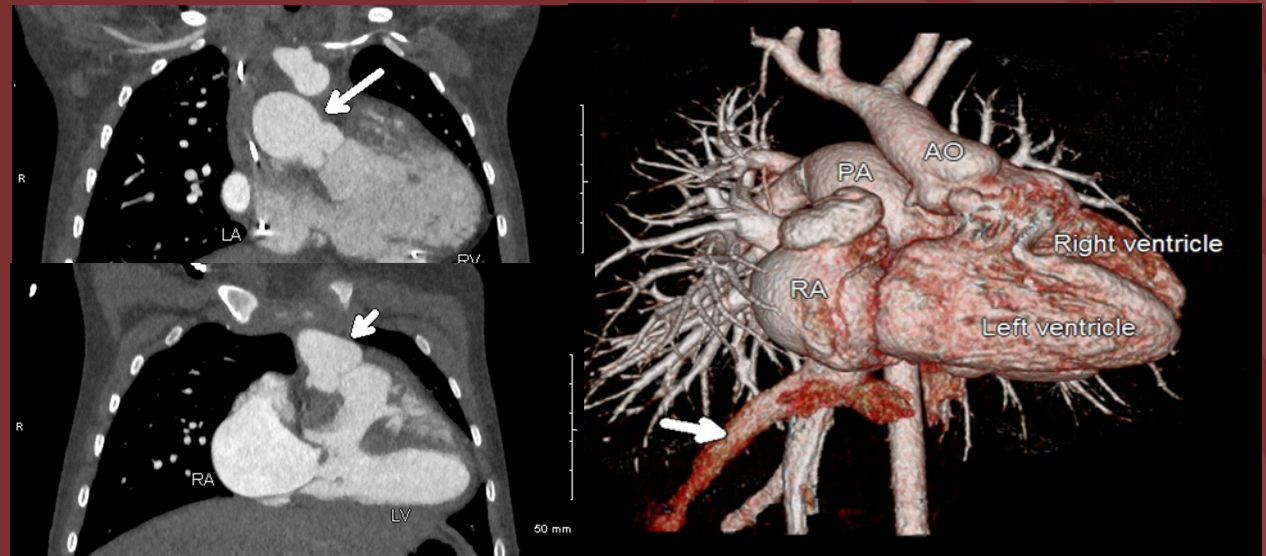


Status post atrial switch operation: Right atrium (RA) flow baffled to right ventricle (RV) with flow to pulmonary artery (PA, long arrow); left atrium (LA) flow baffled to the left ventricle (LV) which is connected to the anterior aorta (AO, short arrow)

Diagnosis: Isolated ventricular inversion (SLD)

At birth: RA to LV to Aorta; LA to RV to Pulmonary artery

- Systemic venous atrium was connected to the right sided morphological left ventricle which was connected to the anterior aorta
- Thus, the systemic venous blood (arrow on 3DR) was entering the aorta giving rise to a d-transposition physiology and cyanosis.



Harinder Singh MD, Daniel Nento MD, Maria-Gisela Mercado-Deane MD,
Monesha Gupta, MD, Children's Hospital of San Antonio

Van Praagh, R., and Van Praagh, S. Isolated ventricular inversion. A consideration of the morphogenesis, definition and diagnosis of nontransposed and transposed great arteries. *American Journal of Cardiology*, 1966; 17, 395.

Quero-Jimenez, M and Raposo-Sonnenfeld, I. Isolated ventricular inversion with situs solitus. *British Heart Journal*, 1975; 37, 293-304