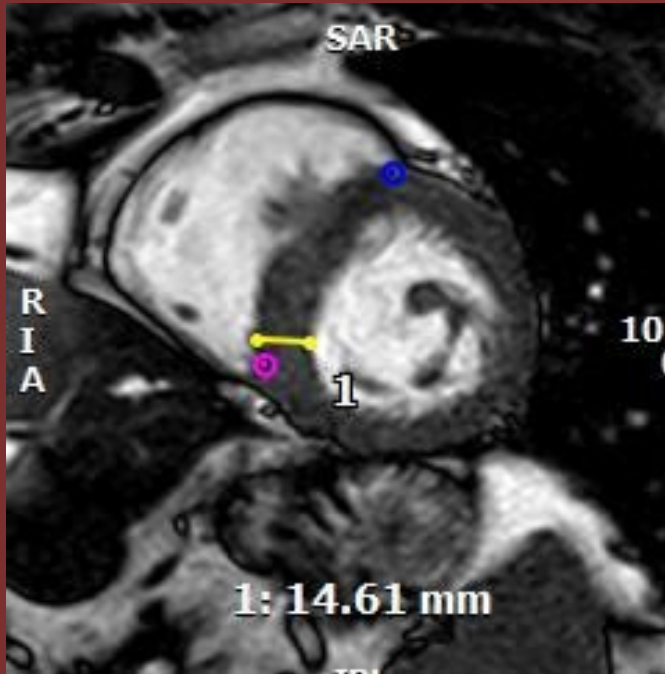
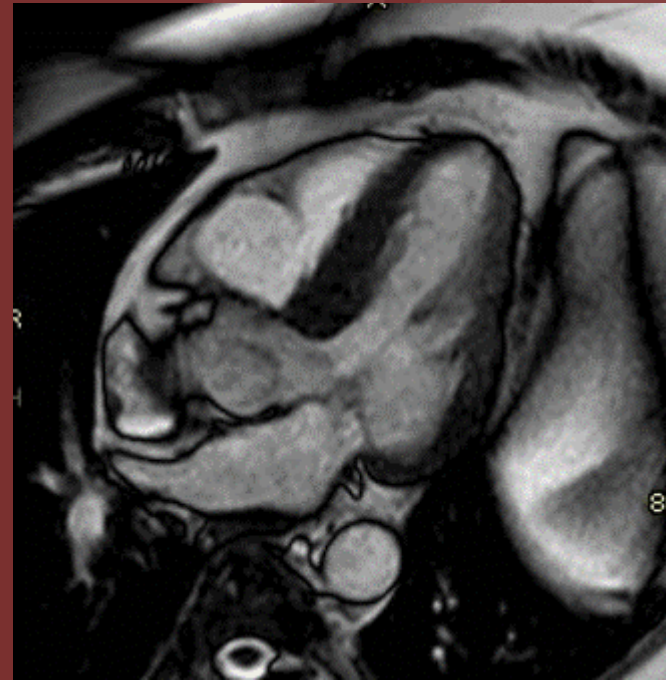


# 69-year-old male with shortness of breath



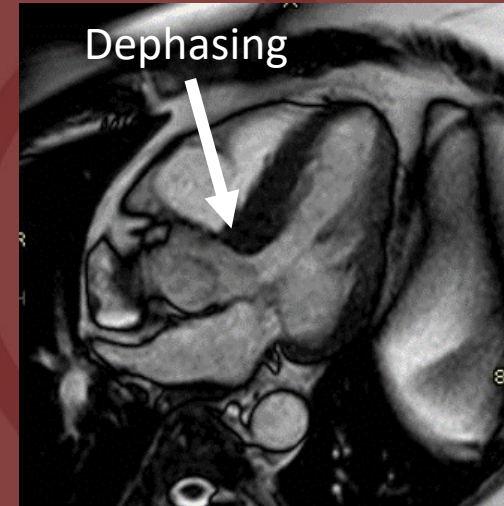
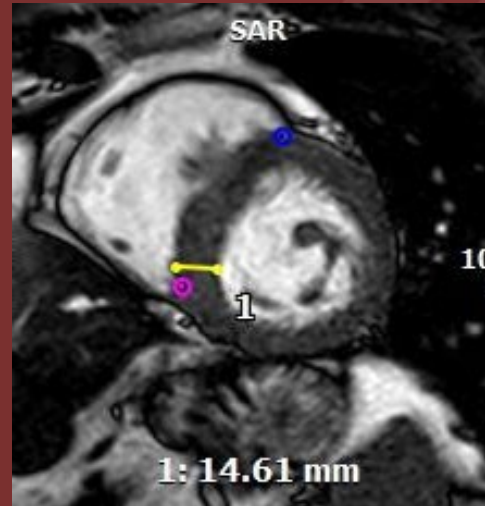
SSFP short axis – end diastolic phase



SSFP LVOT cine

## Systolic anterior motion (SAM) of the mitral valve and LV out flow tract obstruction

- Dephasing jet in the LVOT suggests elevated velocity secondary to obstruction.
- SAM is most commonly seen in the asymmetric septal form of hypertrophic cardiomyopathy. It can also be seen with hypertensive heart disease, diabetes mellitus, acute myocardial infarction, after mitral valve repair, and in asymptomatic patients during pharmacologic stress.



Hypertrophic mid-ventricle inferior septum measures 15 mm in thickness.

Systolic anterior motion (SAM) of the anterior mitral leaflet and acceleration jet over the LV outflow tract (LVOT)

Robert Bodor, Segolene Weller, En-Haw Wu, cardiothoracic imaging, OHSU Radiology