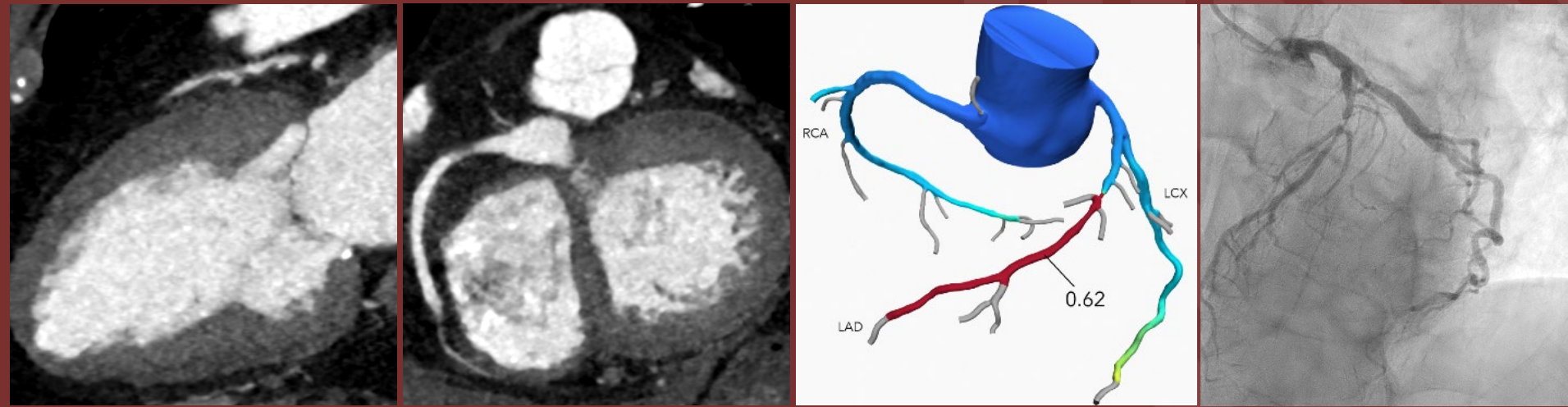


89 year-old female with chest pain



A

B

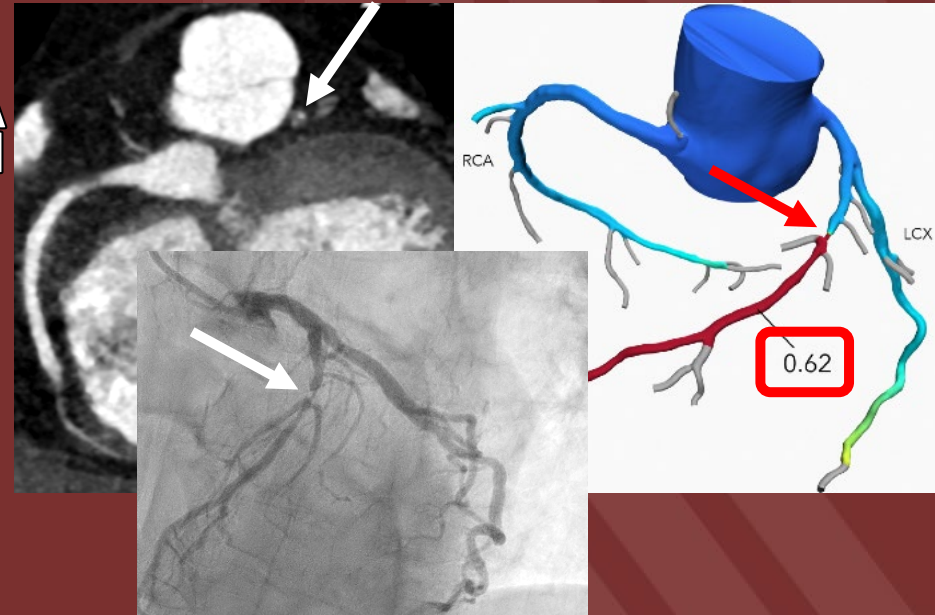
C

D

(A) Vertical long-axis CTA (B) Short-axis CTA (C) FFRct (D) Coronary angiogram

Diagnosis: Severe LAD stenosis on CTA and FFRct

Coronary CTA is a first-line imaging modality to evaluate stable chest pain. FFRct uses CTA data to model coronary flow and resistance. The addition of FFRct to coronary CTA improves specificity of identifying hemodynamically significant coronary stenoses. An FFRct value ≤ 0.75 is abnormal.



Andrew W. Bowman, MD, PhD

Mayo Clinic Florida