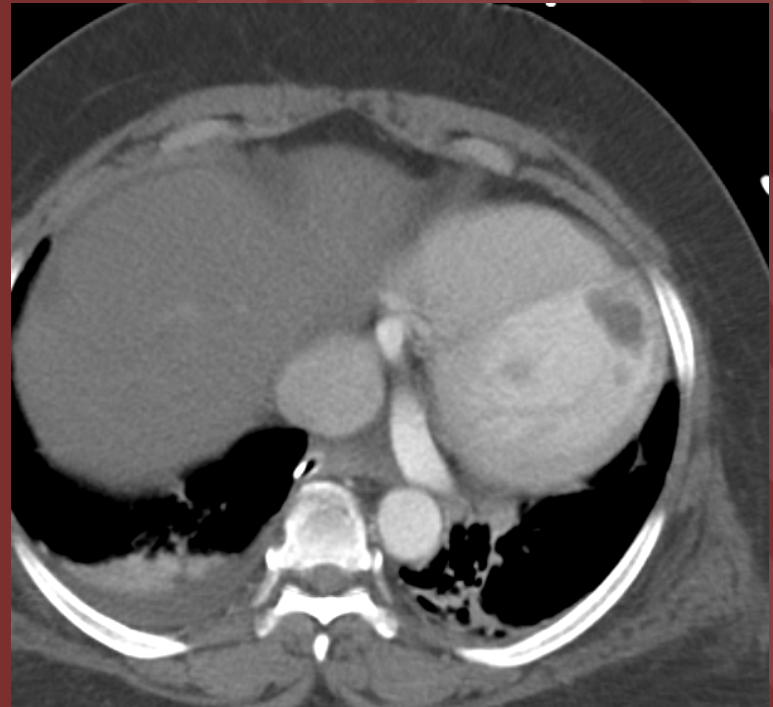


## 51-year-old female with altered mental status



CTA pulmonary embolism study

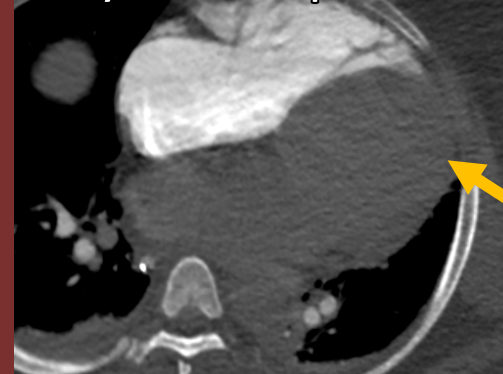


Concurrent CT abdomen with IV  
contrast

## Diagnosis: Left ventricular (LV) thrombus

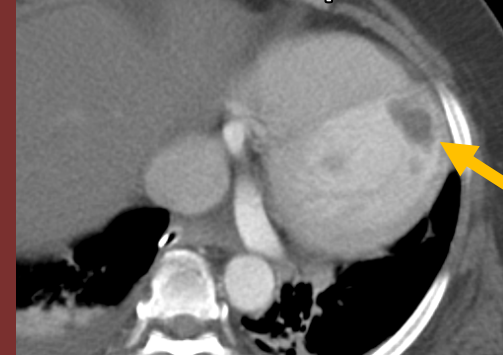
- LV thrombus may be not seen on the early arterial phase CT but can be readily appreciated on the later phase.
- CT attenuation of the LV thrombus is lower than myocardial attenuation.
- Including the first few slices of abdominal CT in the search pattern and assessing CT attenuation of filling defects can help detect thrombi.

Early arterial phase PE scan



Thrombus not seen

Late arterial phase abdominal CT



Thrombus

Robert Bodor, Segolene Weller, En-Haw Wu, cardiothoracic imaging, OHSU Radiology  
, cardiothoracic imaging, OHSU Radiology