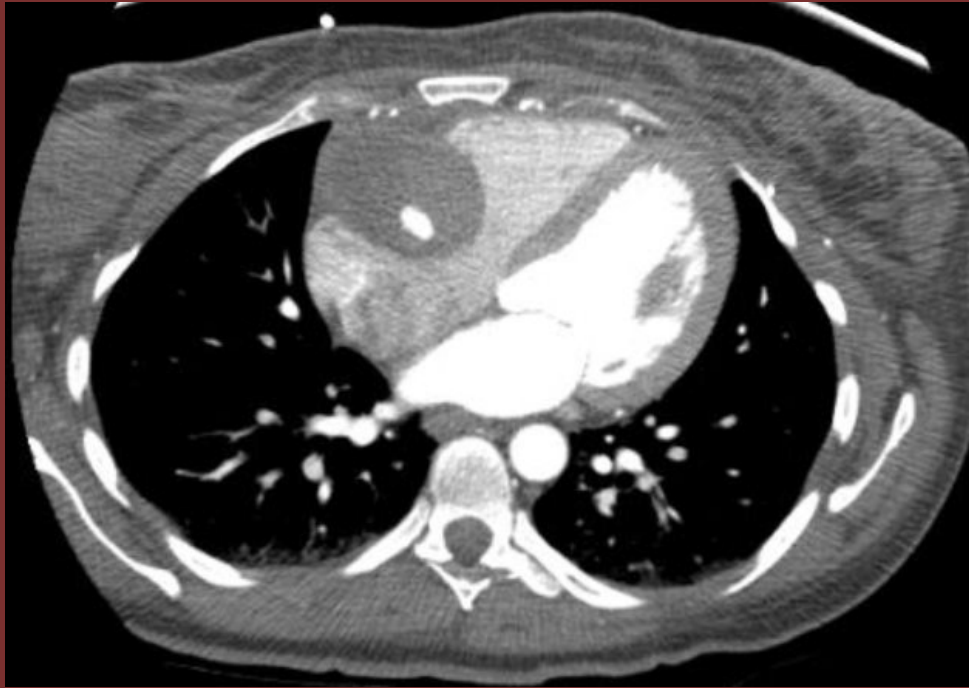


35 y/o F with chest pain



Chest CT with contrast (axial plane)

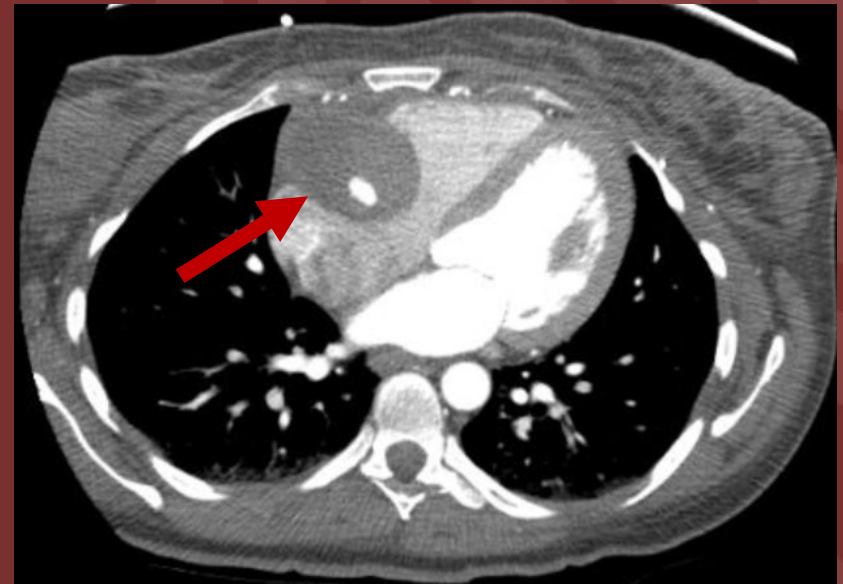


Chest CT with contrast (coronal plane)

Diagnosis: Right coronary artery aneurysm (partially thrombosed) in a patient with Behçet Disease

Behçet's Disease is multisystem disease of unknown cause characterized by a triad of uveitis, oral and genital ulcerations as well as multisystem manifestations due to vascular inflammation

Thoracic manifestations include pulmonary arteries aneurysms, aortic and coronary aneurysms, cardiac thrombi, pleural/pericardial inflammation and pulmonary parenchymal changes such as pulmonary infarcts and hemorrhage.



Mohamed Sayyoub, MBBCh

University of Michigan