

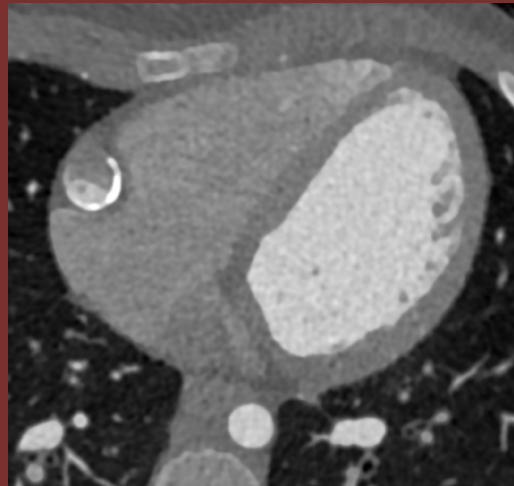
8-year-old female undergoing follow up for known condition

FIGURE(S) GO HERE



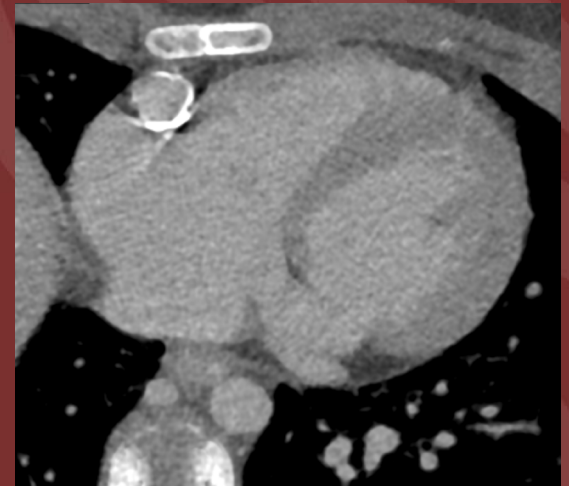
A

(A) 3D rendering



B

Coronary CT angiography
(B) Arterial Phase

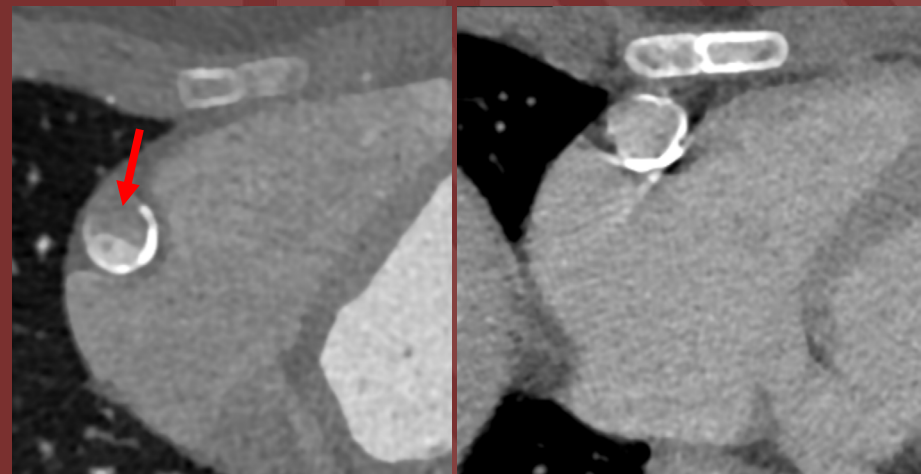


C

(C) Delayed Phase

Diagnosis: Kawasaki disease with Giant Coronary Aneurysm, without thrombosis

Kawasaki disease may result in coronary aneurysms or stenoses. Coronary aneurysms are at risk of thrombosis. Arterial phase imaging may result in apparent filling defects (arrow) due to mixing artifacts in giant aneurysms. Delayed phase imaging is helpful to differentiate mixing artifact (which should resolve on delayed images) from thrombosis (which should persist).



Arterial

Delayed

Erin K. Romberg, MD

Seattle Children's Hospital, University of Washington