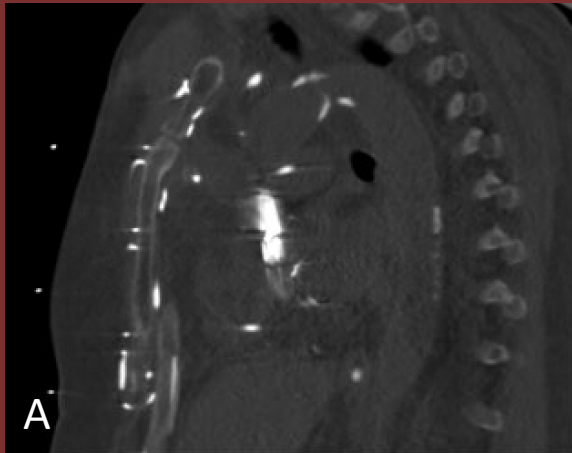
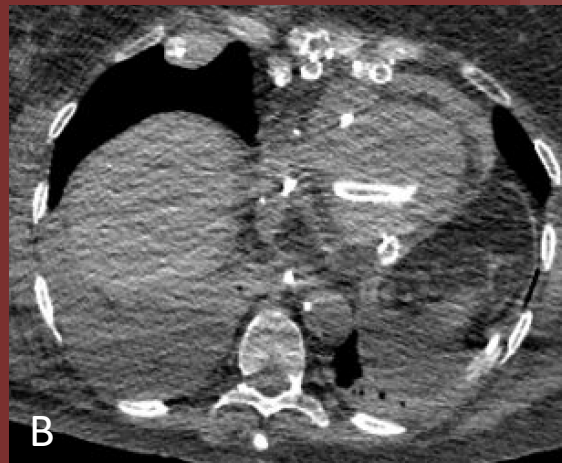


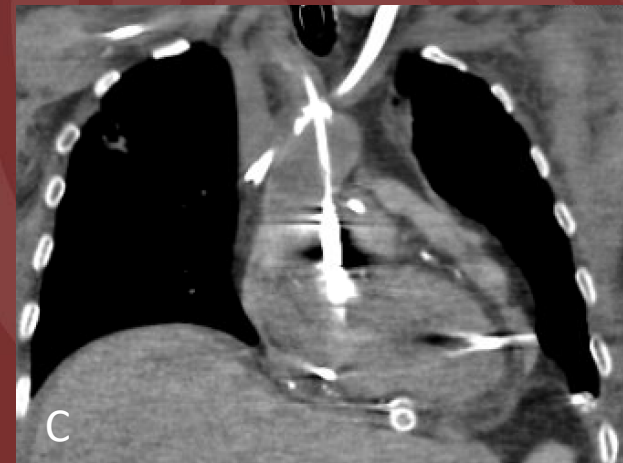
**74 y/o female with dyspnea, shortness of  
breath, and suspected cardiac origin.**



A



B



C

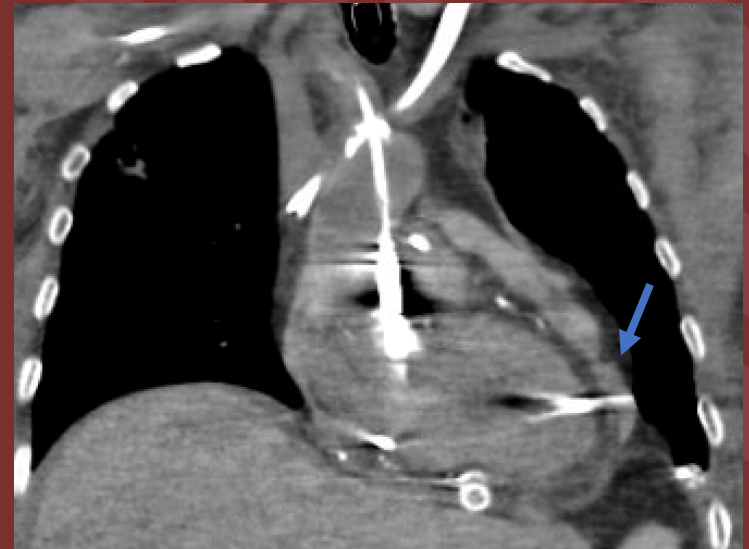
(A) Sagittal Chest CT Non-Contrast

(B) Axial Chest CT Non-Contrast

(C) Coronal Chest CT Non-Contrast

## Diagnosis: Left Ventricular Perforation and Hemopericardium

- In this case, the Impella device has perforated through the left ventricular lateral wall and the tip can be seen in the pericardium. There is high attenuation fluid in the pericardium (blue arrow).
- These findings are suggestive of perforation and hemopericardium.
- This is a consequence of low Impella positioning



Panel displays a coronal chest CT without contrast

Aniruddh Mandalapu B.A., Abhishek Chaturvedi M.D.

University of Rochester School of Medicine