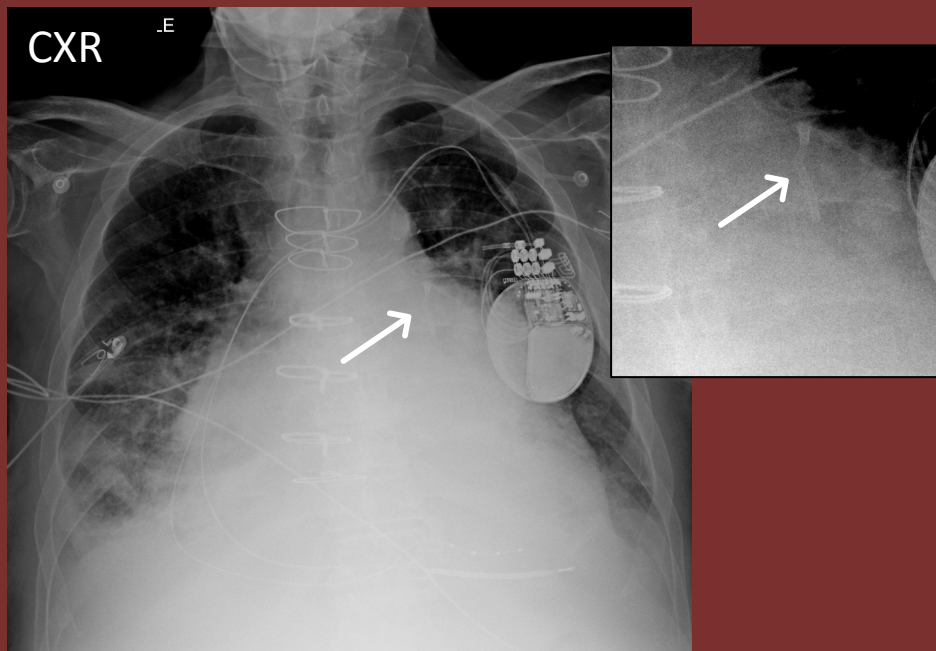
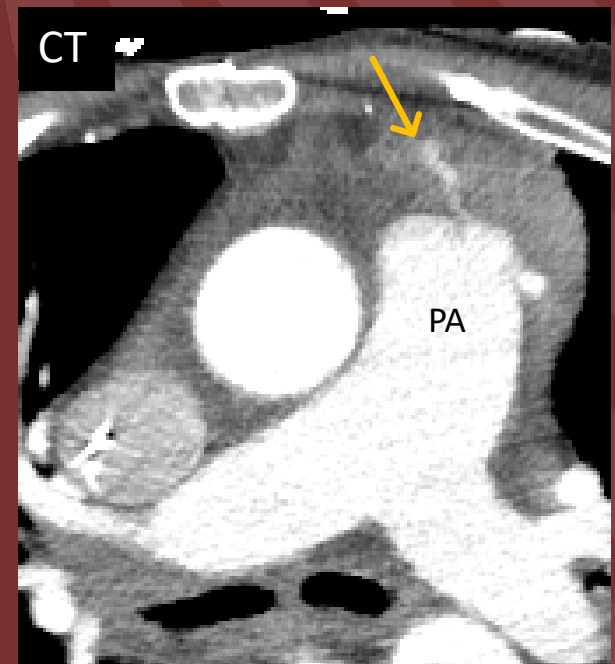


NORTH AMERICAN SOCIETY FOR CARDIOVASCULAR IMAGING

75 yo male presents status post left needle thoracostomy decompression.
Due to the presence of an AICD cardiac device in the left chest wall,
thoracostomy was performed more medially than traditionally done



Chest radiograph full view and magnification
view of the left chest wall



Axial image from CT angiography

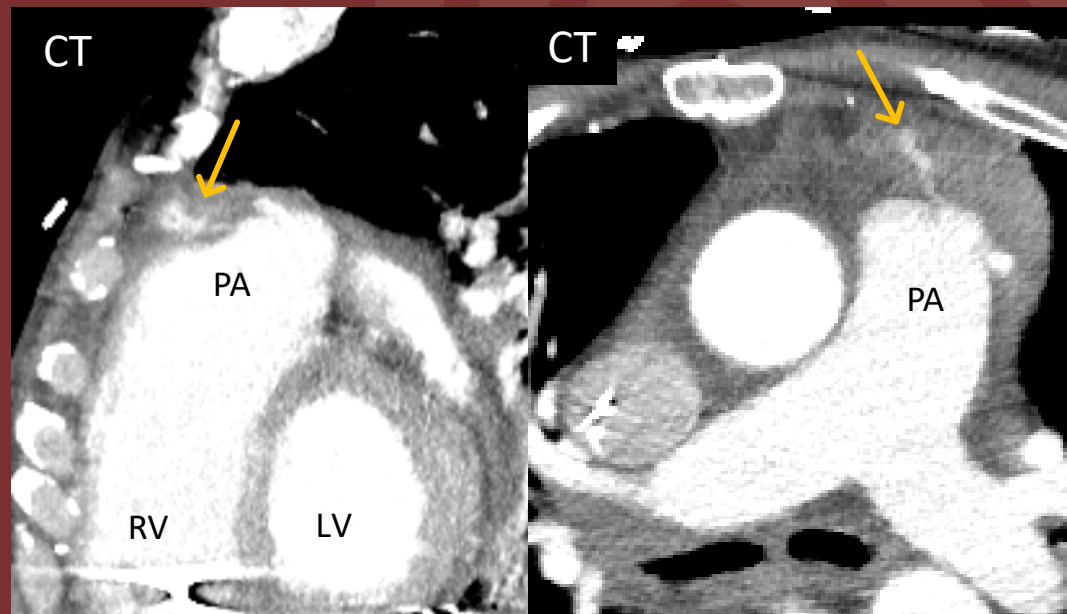
Diagnosis: Iatrogenic Pulmonary Artery Injury

Coronal and axial images from CT angiography of the chest reveals active extravasation from the proximal main pulmonary artery (yellow arrow) with surrounding hematoma (thoracostomy catheter had been removed prior CT)

Complications post needle thoracostomy have a wide range: from ineffective decompression to major vascular injuries.

Life-threatening bleeding due to pulmonary artery or intercostal vessel injury may occur, especially when the normal needle thoracostomy trajectory is changed.

The diagnosis of pulmonary artery injury can be reliably established with CT angiography of the chest.



Dr. Maria Clara Lorca, Dr. Susan Hobbs and Dr. Katherine Kaproth-Joslin

University of Rochester, Rochester, NY