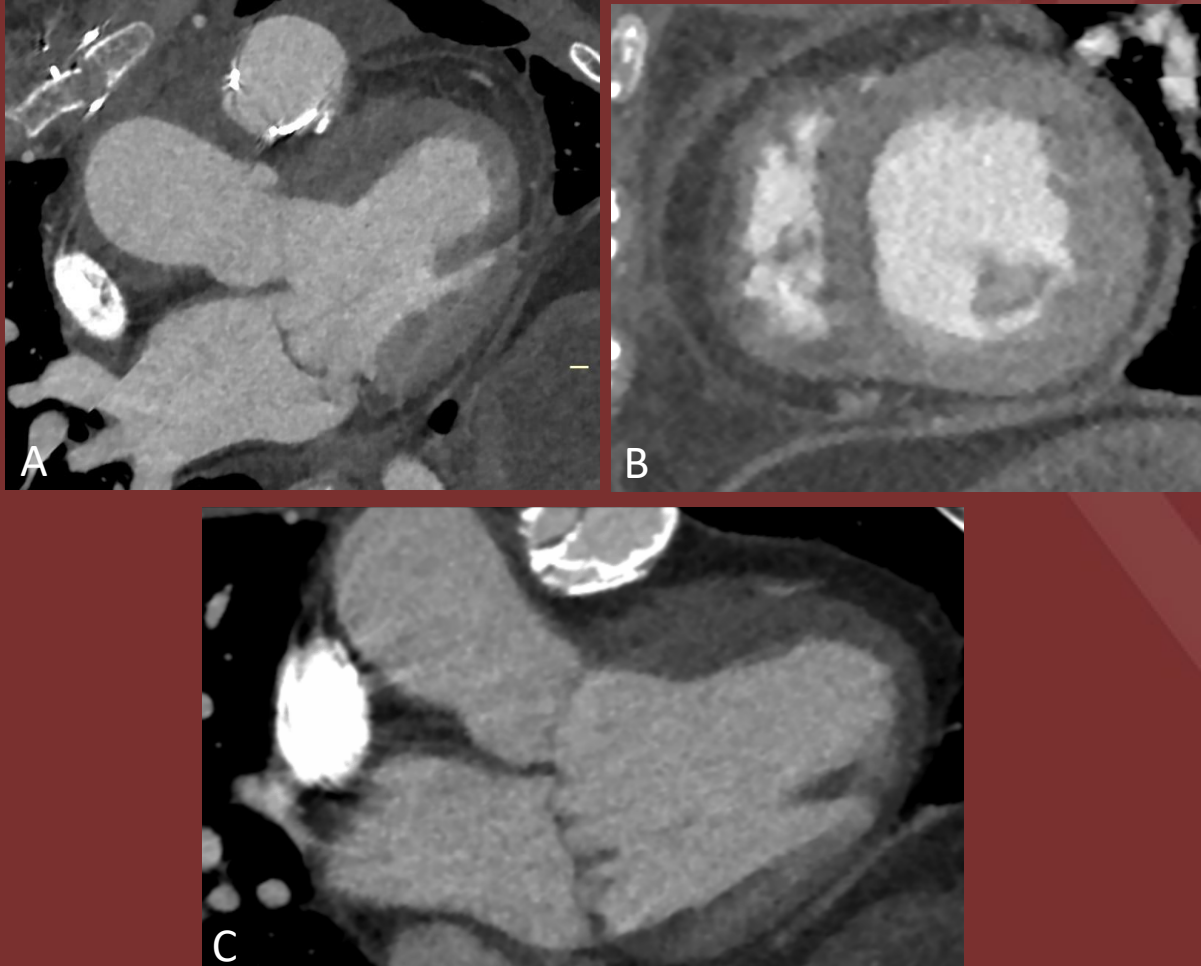


**21 year old male with PMH of tetralogy of fallot s/p repair**



**(A-C) Contrast enhanced cardiac CTA**

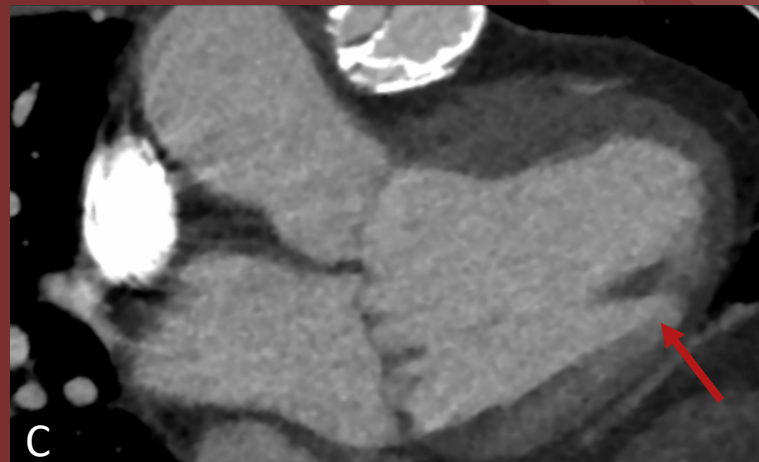
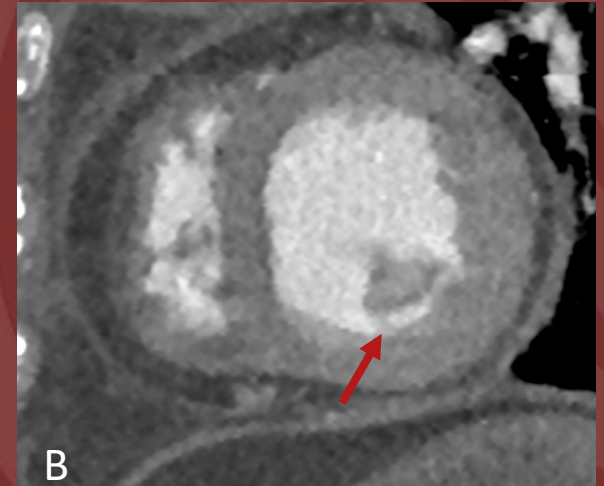
## Diagnosis: Parachute Mitral Valve

Parachute mitral valves occur when all the chordae tendineae are attached to a single papillary muscle origin (arrow).

The single origin causes bileaflet prolapse (oval).

Can be part of the Shone Complex:

- Supravalvular mitral ring
- Subaortic stenosis
- Aortic coarctation
- Parachute mitral valve



Shira Steinberger, MD; Quynh A. Truong MD MPH

Weill Cornell Medicine