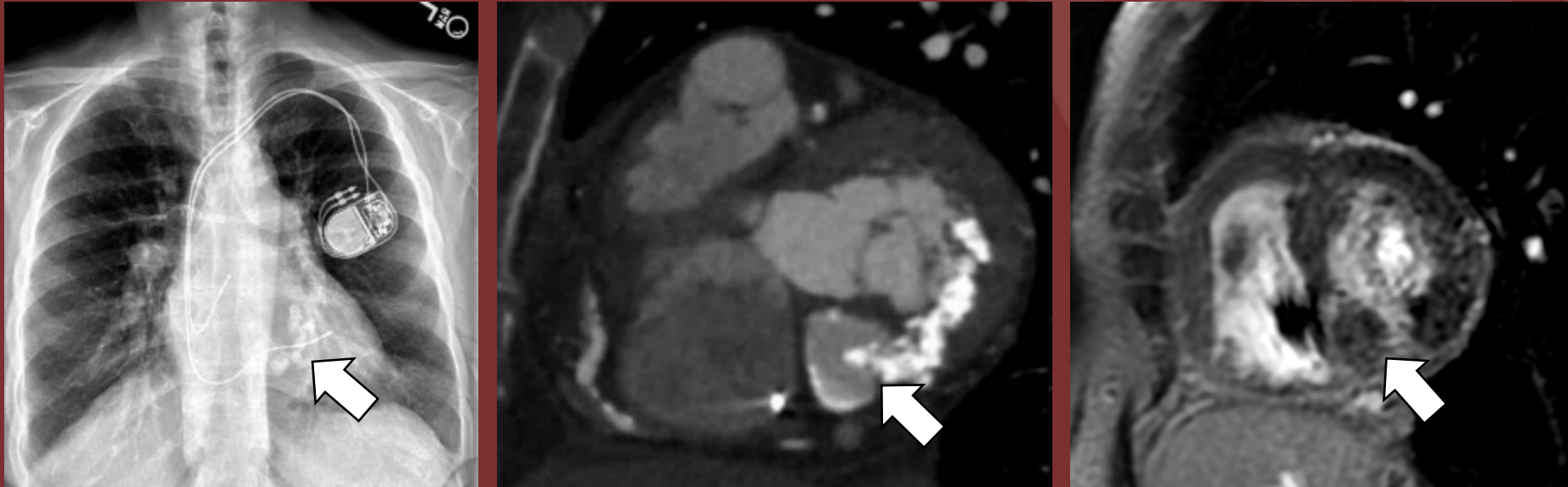


The 50th Anniversary  
Fantastic Cases In Cardiovascular Imaging. Case 50

History: 70 year-old female with mitral regurgitation



Frontal radiograph shows mitral annular calcification. Short-axis cardiac CTA image shows heavy mitral annular calcification with an adjacent area of high density along the inferior septal margin of the annulus. Delayed enhancement MR image shows areas of myocardial enhancement surrounding the low signal intensity cavity, which is filled with caseous material.

## Diagnosis: Caseous mitral annular calcification

Caseous calcification of the mitral annulus is a rare, but benign variant of mitral calcification, commonly misdiagnosed as abscess, vegetation or tumor. Calcifications or low-density caseous material may infiltrate into the myocardium and cause conduction abnormalities. Rarely, caseous material has been reported to embolize systemically.

Gianni Giancaspro, Albert Hsiao, Seth Kligerman

University of California, San Diego