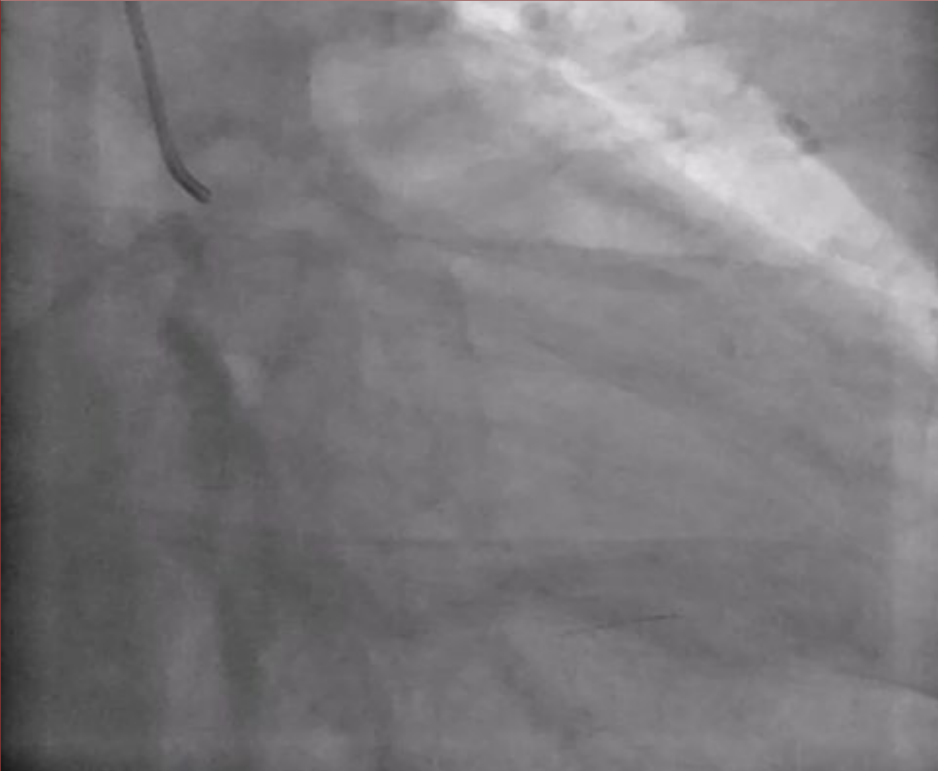


## The 50th Anniversary Fantastic Cases In Cardiovascular Imaging. Case 47

Right anterior oblique cranial left main injection coronary angiogram shows normal coronaries but **mobile metallic density**

Patient sent for CT which shows a linear **metallic lesion** perforating the apical RV free wall and septum with **hemopericardium**



45 y.o. male with acute left chest pain radiating to left upper extremity, onset during heavy lifting while camping  
Prior ATV crash with bilateral femur & acetabular fractures 6 years ago  
Normal ECG but initial troponin I mildly elevated (0.16, nl <0.12)

Diagnosis: IVC FILTER FRACTURE with migration of the tyne to the RV, causing laceration and hemopericardium. The patient underwent median sternotomy and removal of the tyne, and closure of the RV laceration. IVC filter was also retrieved, and the patient recovered uneventfully.

Comparison with a prior study from 6 years ago demonstrates altered position of the filter with a **missing tyne**

