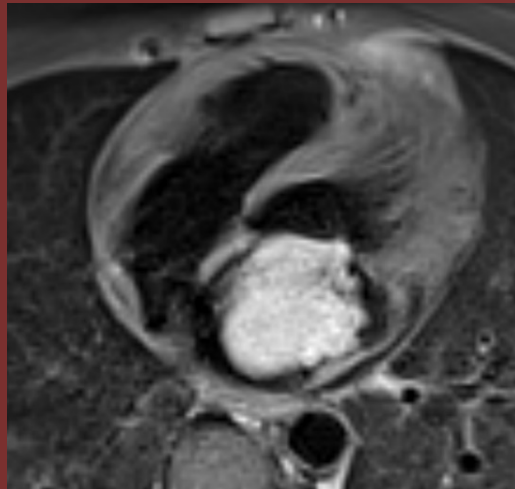


The 50th Anniversary

Fantastic Cases In Cardiovascular Imaging. Case 44

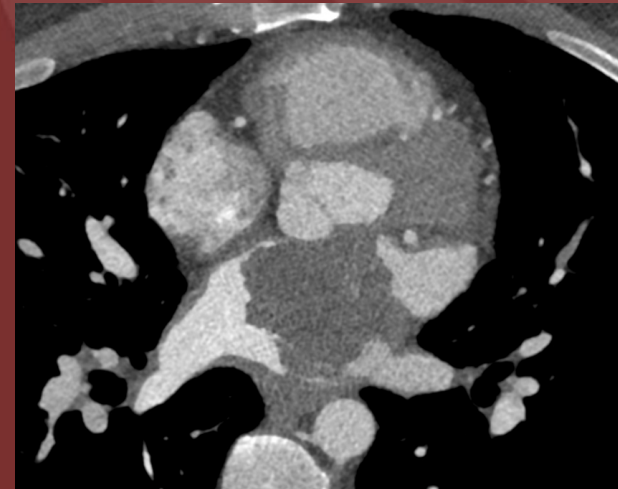
History: 44 year-old male with dyspnea on exertion



A



B



C

Figure(s): A) Axial T2-weighted MR with fat saturation; B) 4-chamber MR with late gadolinium enhancement; C) Axial gated CT coronary angiogram

Diagnosis: Left Atrial Intimal Sarcoma

Rare cause of cardiac mass, this tumor is more commonly found in the pulmonary artery and great vessels. In this case, the tumor may have arisen from the pulmonary veins and grown into the left atrium, simulating a myxoma.

William Truesdell

University of Michigan Radiology