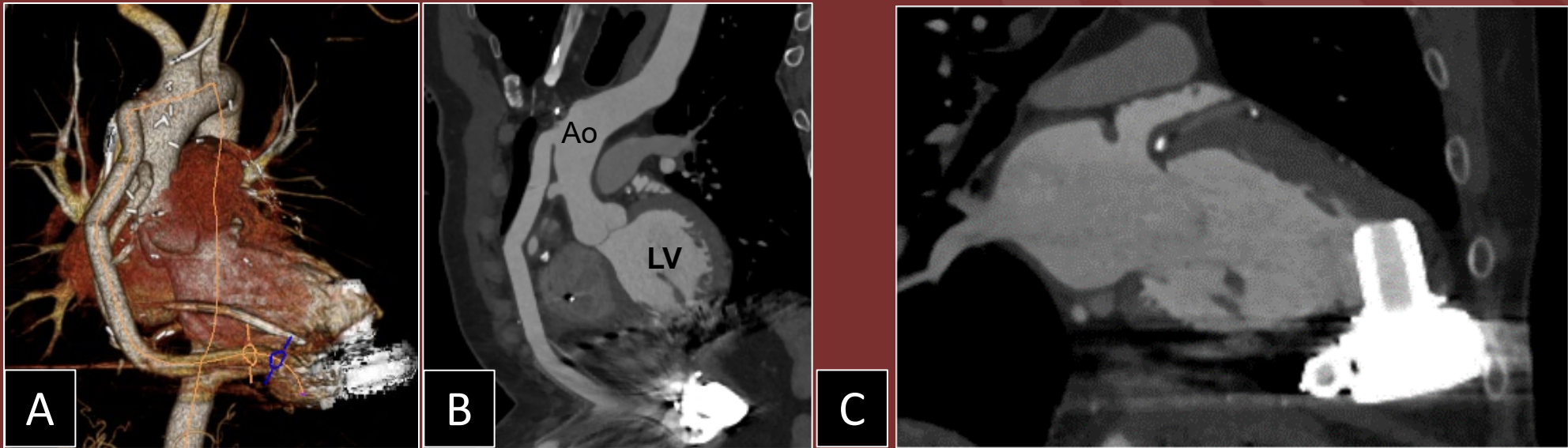


## The 50th Anniversary

### Fantastic Cases In Cardiovascular Imaging. Case 8

History: 52-year-old male, presenting with continuous left ventricular assist device (LVAD) low-flow alarms, Retrospective ECG gated cardiac CTA was done



A: Volume rendered 3D of the Heart, Aorta and LVAD

B: Curved MPR of the LVAD outflow cannula, Ao: aorta, LV: left ventricle

C: Oblique coronal – cine, Left 2 Chamber view , LA: left atrium

Diagnosis:

Mal-directed LVAD inflow cannula towards the anteroapical wall of the left ventricle, with intermittent obstruction, predominantly during systole (thick arrow in C). The LVAD outflow cannula is patent without evidence of stenosis or thrombi (thin arrows in A and B).

