

The 50th Anniversary

Fantastic Cases In Cardiovascular Imaging. Case 7

History: 74 year-old male with abdominal pain, history of
Atrial fibrillation, S/P Watchman device placement

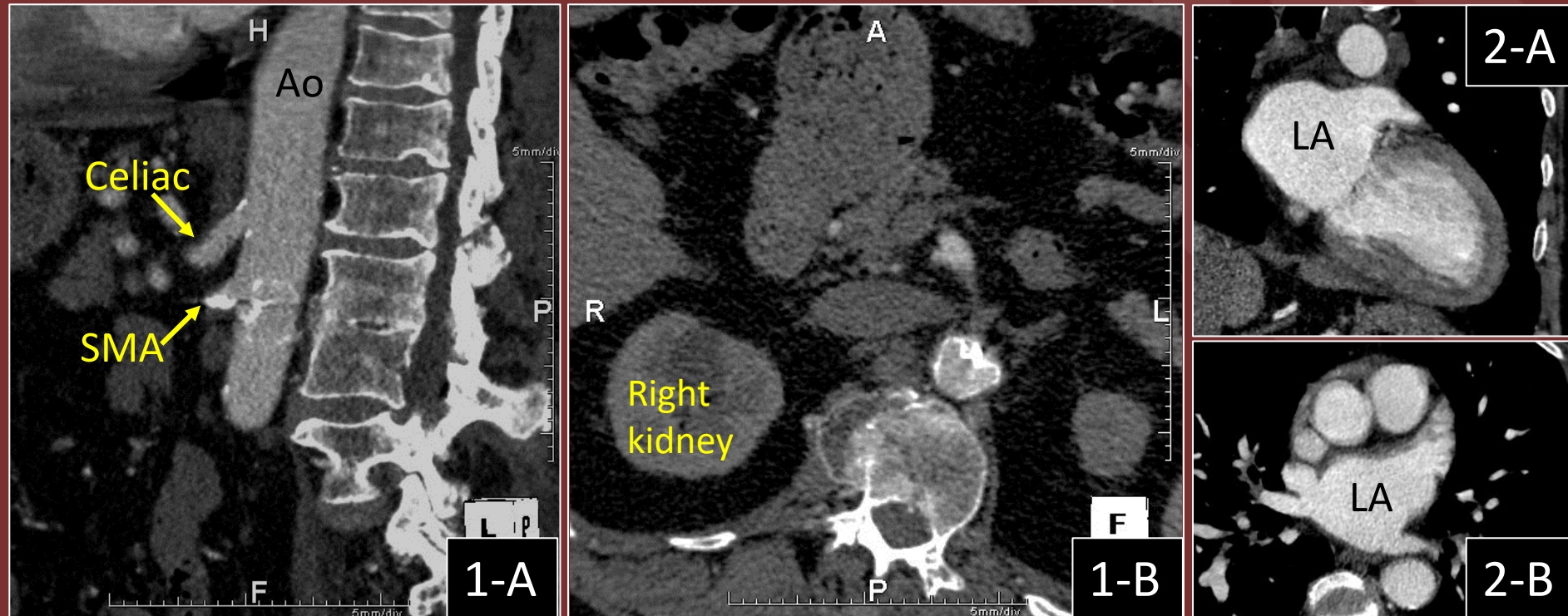
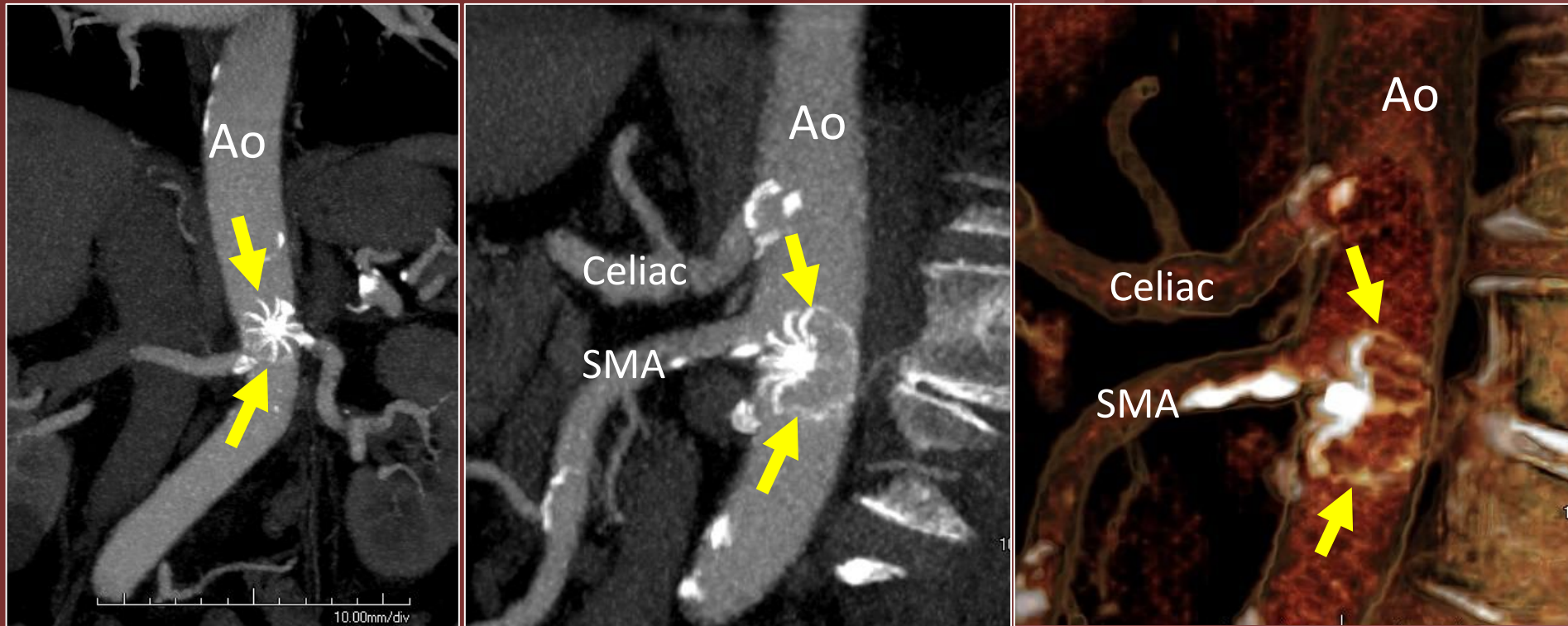


Figure 1: Abdominal CTA, A-Oblique sagittal , B-Oblique axial, Ao: Aorta.

Figure 2: Chest CTA, A-Oblique coronal, B-Oblique axial, LA: left atrium.

Diagnosis:

Embolized Watchman device to abdominal aorta (arrows).
The device was successfully removed percutaneously.



SMA: Superior Mesenteric Artery.

Asmaa Ahmed, MD, Muhammad U. Aziz, MD, Padma Manapragada, MD, Mostafa Abozeed, MD, Satinder Singh, MD, University of Alabama at Birmingham