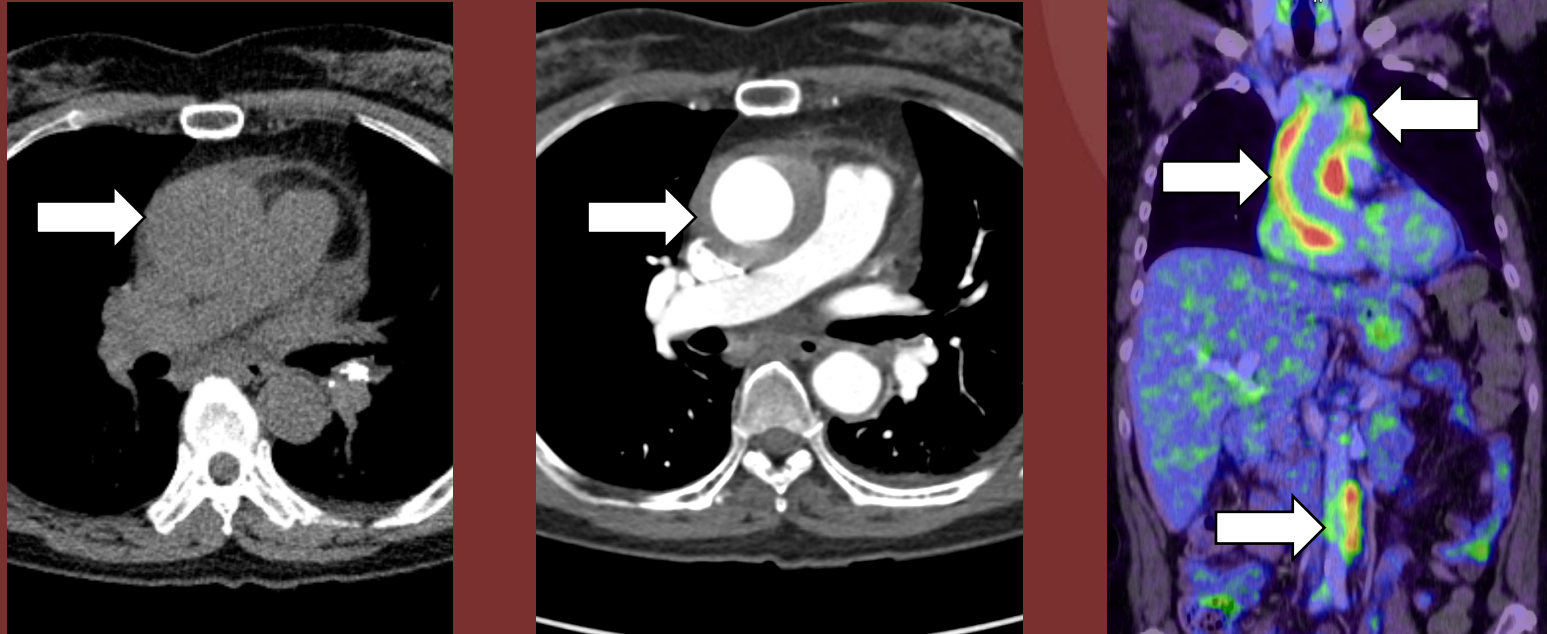


The 50th Anniversary

Fantastic Cases In Cardiovascular Imaging. Case 38

History: 65-year-old woman with acute chest pain



**Figures:** (A&B) Pre- and post-contrast axial CTA of the chest demonstrating circumferential thickening of the ascending aorta (49 HU on pre-contrast). (C) F18-FDG-PET/CT coronal fusion demonstrates hypermetabolic activity at the ascending aorta, arch, and abdominal aorta

Diagnosis: Large vessel vasculitis (aortitis), giant cell  
arteritis

