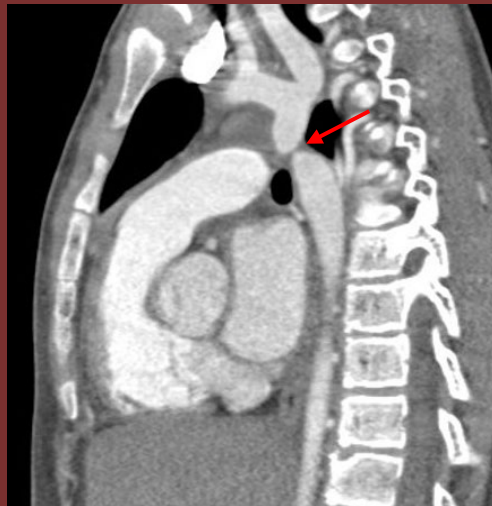


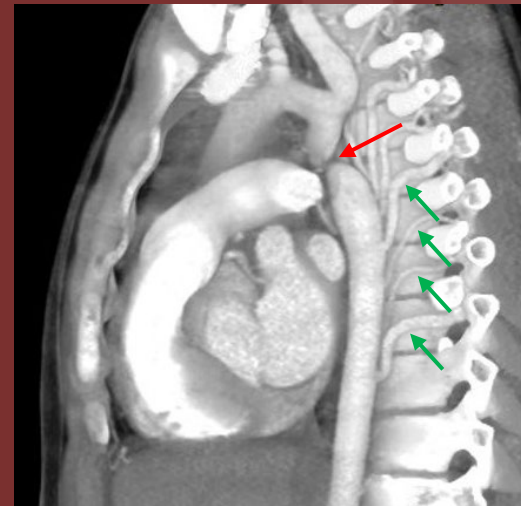
The 50th Anniversary

Fantastic Cases In Cardiovascular Imaging. Case 35

History: 16-year-old male with difficulty breathing.



A



B

Figure(s): CTA chest sagittal view (A) and MIPS reconstruction (B) show short segment abrupt stenosis of post-ductal aorta (red arrows) with prominent collateral intercostal arteries (green arrows).

## Diagnosis: Coarctation on the aorta.

Post-ductal coarctation of aorta is often associated with dilated intercostal and internal thoracic arteries to bypass the coarctation and supply the descending aorta.