

The 50th Anniversary
Fantastic Cases In Cardiovascular Imaging. Case 33

History: 68-year-old male with shortness of breath.

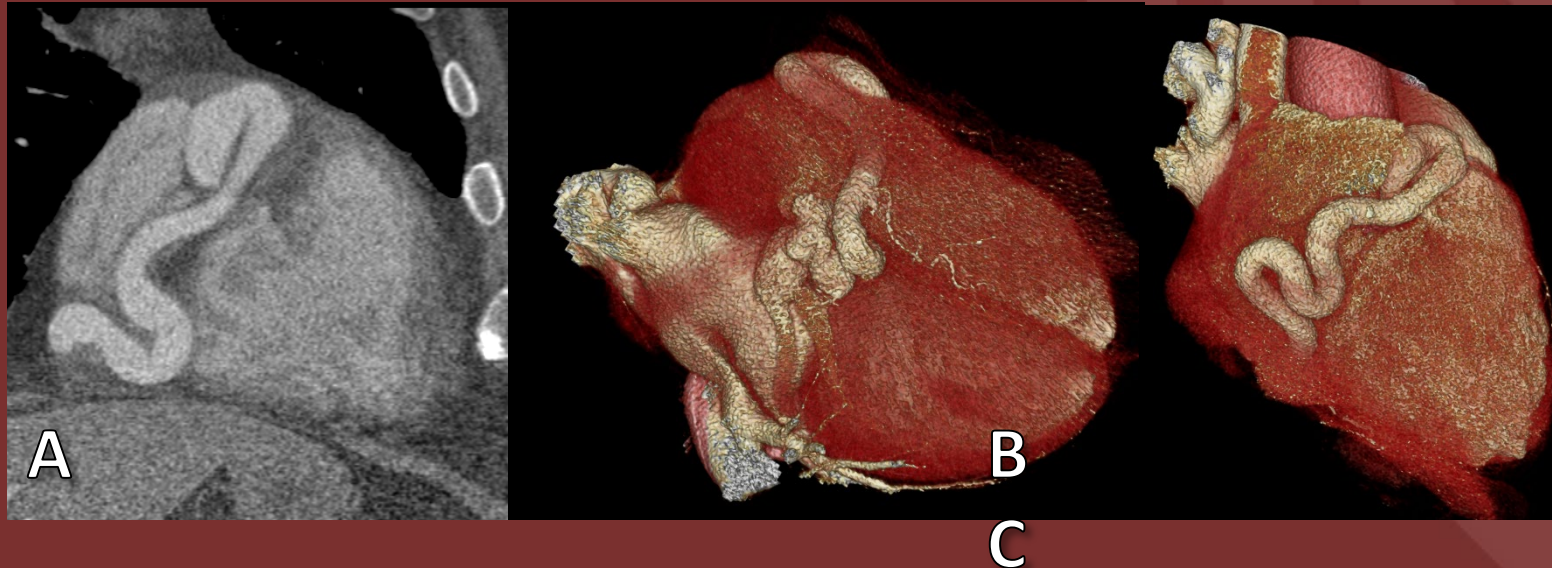
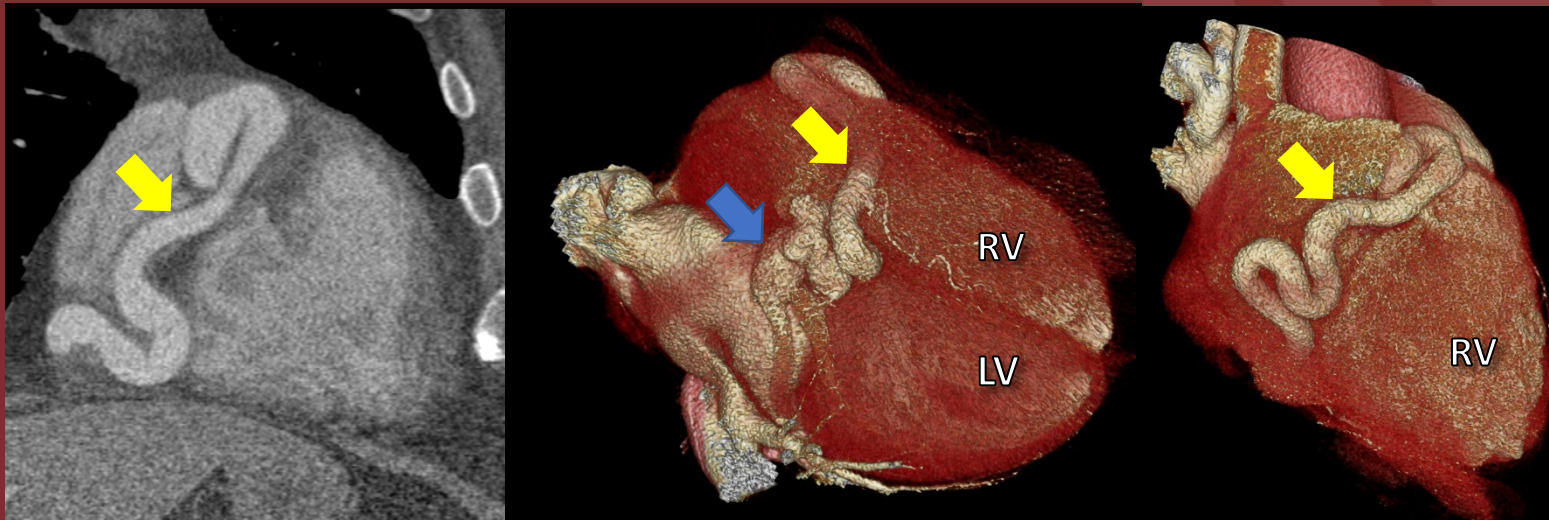


Figure 1: (A) 2D double-oblique Coronary CTA (B,C) 3-D Volume rendered images of same patient in the AP and posterior projections.

Diagnosis: RCA - Coronary Sinus fistula

The pathophysiology of a coronary artery fistula (CAF) depends on the resistance of the fistulous connection and on the site of fistulous termination. Therefore, accurate imaging assessment of the origin and drainage site of CAF is crucial.



Lana Malekan¹, MD, Matthew Pavlica² MS4, and Nikhil Goyal¹, MD FNASCI

¹Northwell Health System/Barbara and Donald Zucker School of Medicine

²NYIT College of Osteopathic Medicine