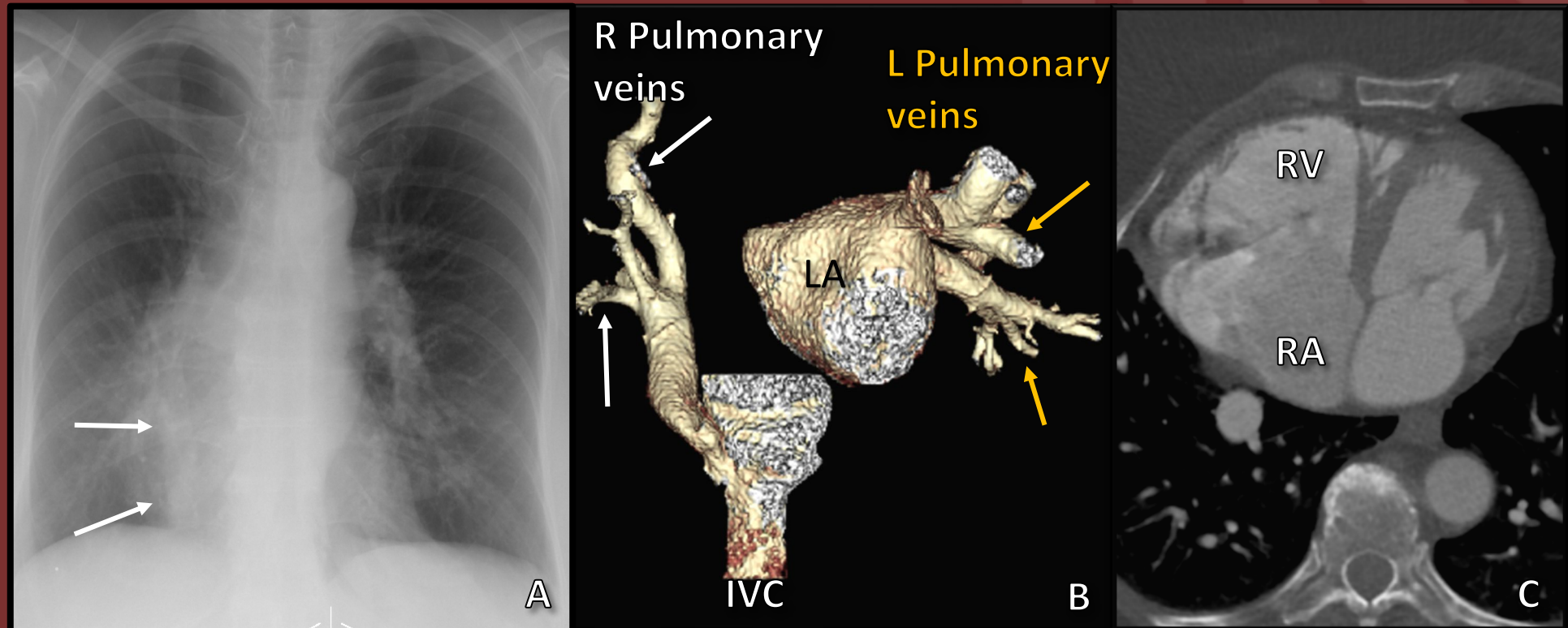


The 50th Anniversary

Fantastic Cases In Cardiovascular Imaging. Case 28

History: 71 year-old female, with incidentally detected abnormality on imaging performed for bronchitis



Chest radiograph (A) shows hypoplastic rt lung with dextroposition and scimitar vein (arrow), which is confirmed on CT (B). Note the dilated RV and RA (C)

## Diagnosis: Scimitar syndrome

Characterized by a hypoplastic right pulmonary artery and right lung with displacement of heart into the right hemithorax, and an anomalous right pulmonary vein that drains into the inferior vena cava resembling a curved Turkish sword “scimitar”. Various other anomalies are associated with this syndrome

This was treated in this 71 year old individual by reimplantation of scimitar vein and intra-atrial baffling of pulmonary venous flow through the atrial septum to the left atrium. Patch augmentation of inferior vena cava was also performed.