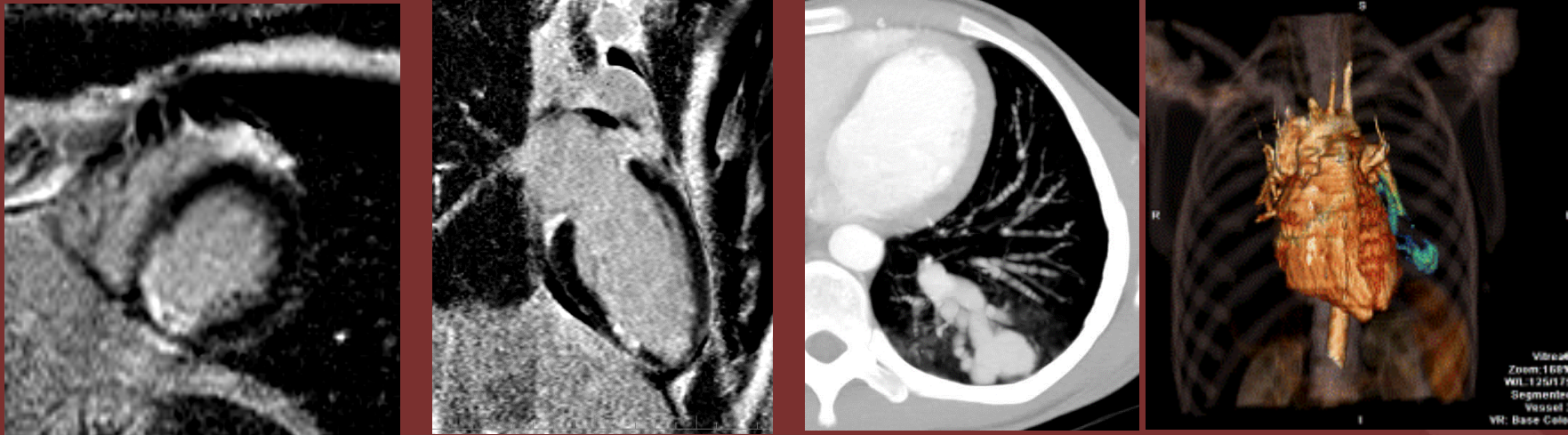


The 50th Anniversary

Fantastic Cases In Cardiovascular Imaging. Case 26

History: 17 year-old boy with chest pain, elevated troponins.



Far left and center left: Subendocardial RCA distribution focus of LGE.
Center right and far right: MIP axial chest CT and volume rendered rotating
CT shows large LLL pulmonary AVM.

NORTH AMERICAN SOCIETY FOR CARDIOVASCULAR IMAGING

Diagnosis: Acute embolic myocardial infarction related to paradoxical embolism in a patient with large pulmonary AVM.

Author: Daniel Vargas, MD FNASCI

University of Colorado Anschutz Medical Campus