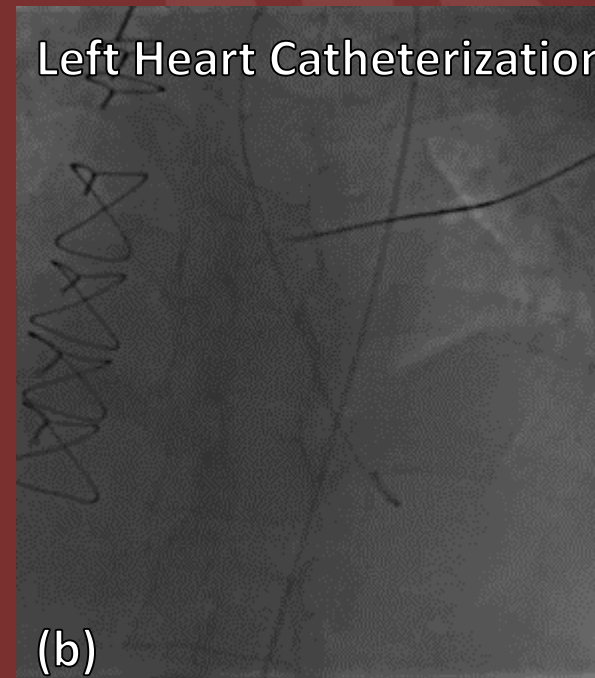
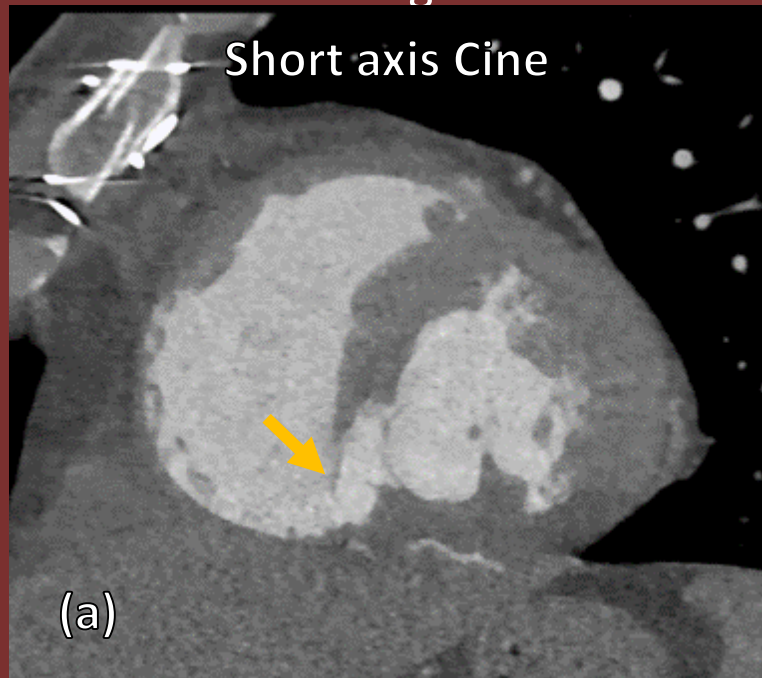


The 50th Anniversary

Fantastic Cases In Cardiovascular Imaging. Case 25

History: 56-year-old-male post-myocardial infarction VSD post patch repair  
1 month ago



**Figure(s):** (a) Path repair of the VSD with dehiscence and residual VSD (b) Left heart injection shows contrast opacification of the right ventricle consistent with residual VSD and patch dehiscence

## Diagnosis: Ventricular septal defect patch dehiscence

Post-myocardial infarction ventricular septal defect is a rare complication with high mortality. Initial course is mildly symptomatic with rapid progression to severe heart failure.

**Anushri Parakh, MD, Sandeep S Hedgire, MD**

**Massachusetts General Hospital, Boston**