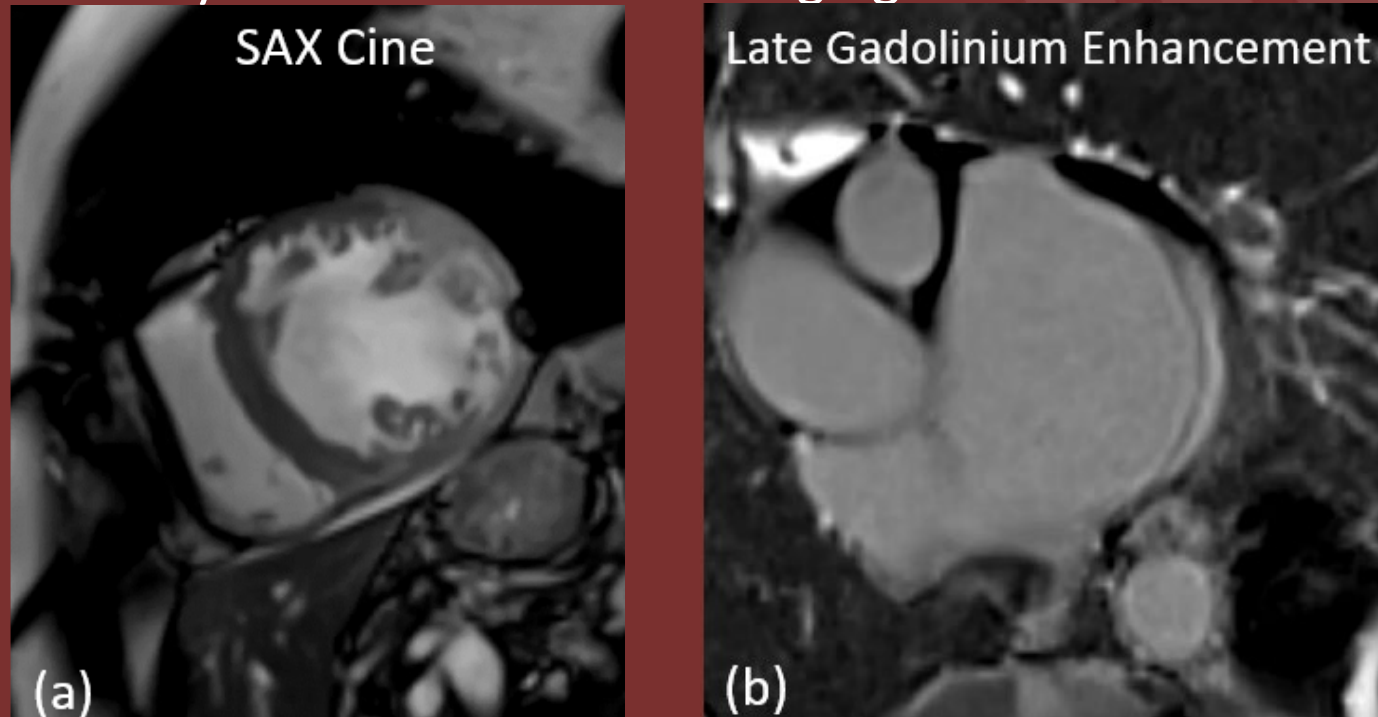


The 50th Anniversary

Fantastic Cases In Cardiovascular Imaging. Case 23

History: 73 year old female from El Salvador with chest pain, no coronary artery disease on catheter angiogram.



Figure(s): (a) Severely reduced resting left ventricular systolic function (LVEF 27%) with global hypokinesia. (b) There is myocardial wall thinning with associated transmurular late gadolinium enhancement involving basal-apical lateral walls.

Diagnosis: Chagas Cardiomyopathy

Dilated cardiomyopathy with segmental wall motion abnormalities and late gadolinium enhancement in a non-coronary distribution, in an individual from an endemic area aids in correct diagnosis. Apical aneurysms may also be seen.

Anushri Parakh, MD, Sandeep S Hedgire, MD

Massachusetts General Hospital, Boston