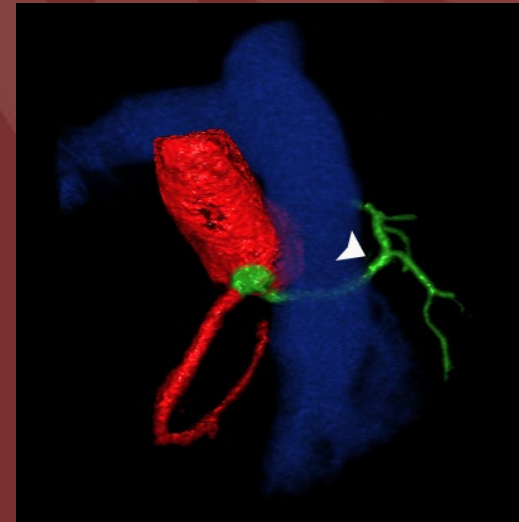
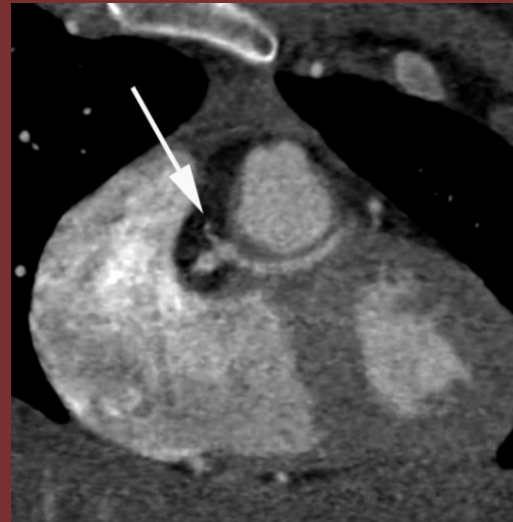
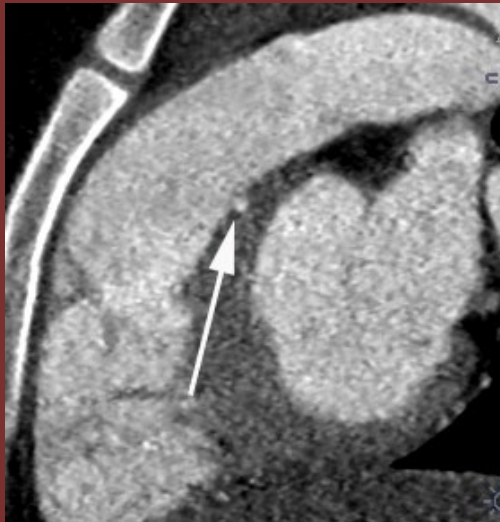


The 50th Anniversary
Fantastic Cases In Cardiovascular Imaging. Case 22

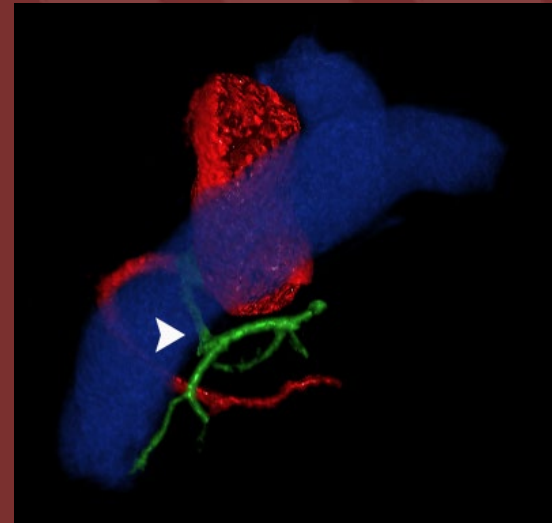
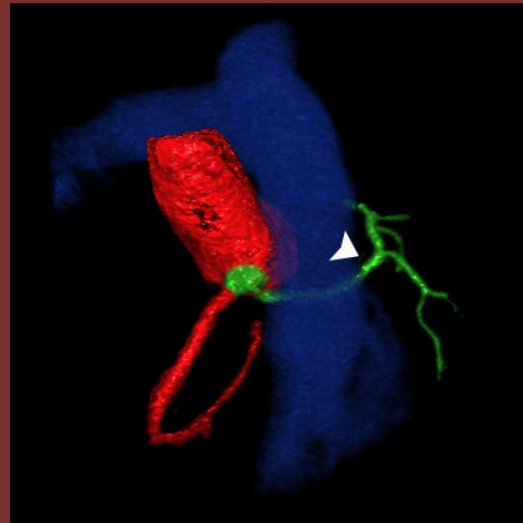
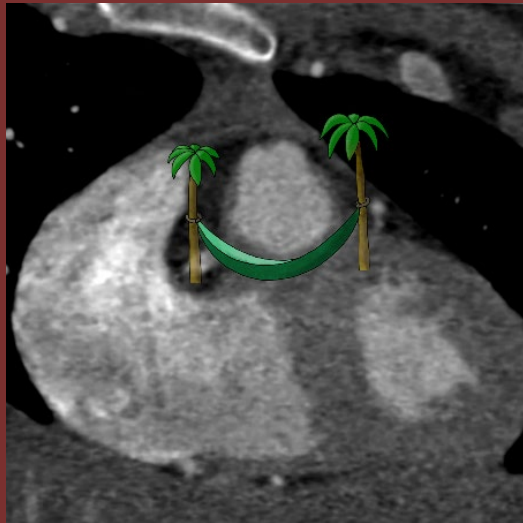
History: 14-year-old female with systolic hypertension and echocardiogram abnormality.



Figure(s): Coronary CTA in sagittal and coronal oblique views showing an abnormal left coronary artery course (arrow). Color coded 3D reformat images demonstrating the left coronary artery arising from the right coronary sinus (green and arrowhead).

Diagnosis: Anomalous left coronary artery (ALCA) arising from the right sinus with a transseptal course, also termed the “Hammock Sign”

The transseptal variant ALCA is typically considered a benign course, although some publications report adverse cardiovascular events occurring in up to 26% of these patients.



**JW Revels, M Zielinski, M Epstein. University of New Mexico
SS Wang. University of Utah**