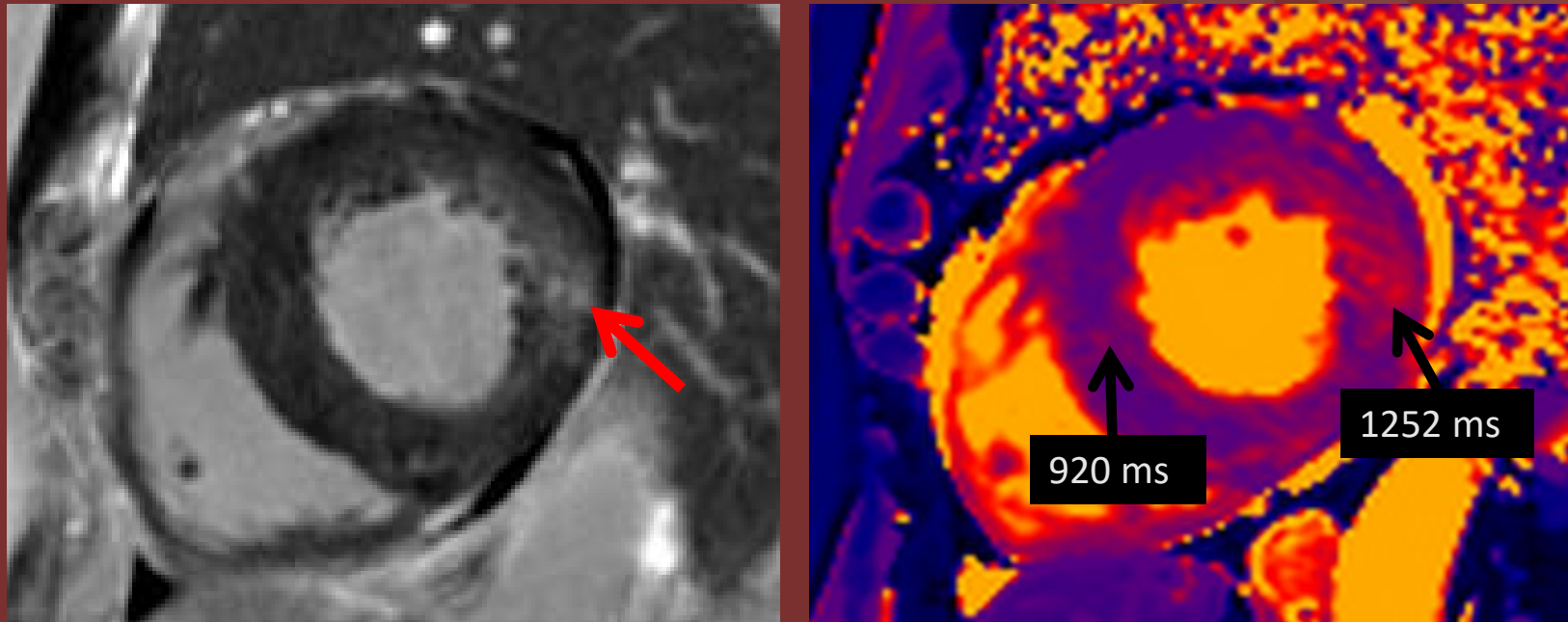


The 50th Anniversary

Fantastic Cases In Cardiovascular Imaging. Case 21

History: 30-year-old male with LVH on echocardiography.



Figure(s): Cardiac MRI at 1.5T demonstrates LVH and mid-wall LGE at the basal inferolateral wall (red arrow). Native T1 values were diffusely low (920 ms) at the interventricular septum in keeping glycosphingolipid accumulation. Native T1 values were focally high at the inferolateral wall (1252 ms) corresponding to the area of LGE.

Diagnosis: Fabry Disease

Native T1 values are typically diffusely low reflecting myocardial glycosphingolipid deposition but can be focally elevated at the inferolateral wall due to inflammation and fibrosis.

Kate Hanneman MD MPH

Department of Medical Imaging, University of Toronto