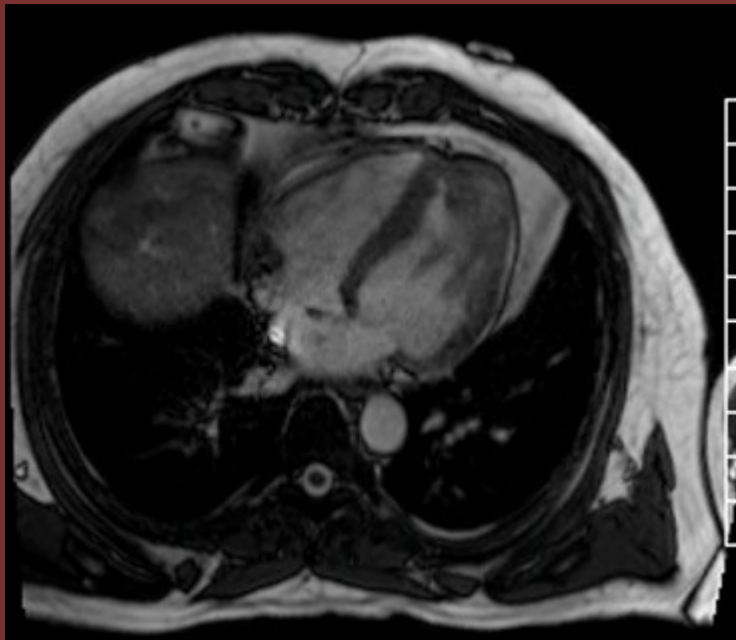


The 50th Anniversary

Fantastic Cases In Cardiovascular Imaging. Case 20

History: 48 year old male with six months of weakness and hypereosinophilia.



Figures: 4 chamber SSFP cine (left) and 4 chamber delayed gadolinium (right) demonstrate apical thickening, apical subendocardial delayed enhancement, and LV thrombus.

Diagnosis: Hypereosinophilic Syndrome  
(Loeffler's Endocarditis).

Focal thickening and akinesia of the left ventricular apex with associated apical subendocardial delayed enhancement and ventricular thrombus in the setting of hypereosinophilia.

Nicole A Markwith, MD and Shaimaa A Fadl, MBChB

Virginia Commonwealth University