

The 50th Anniversary

Fantastic Cases In Cardiovascular Imaging. Case 2

History: 58 year-old, Female, with new-onset atrial fibrillation

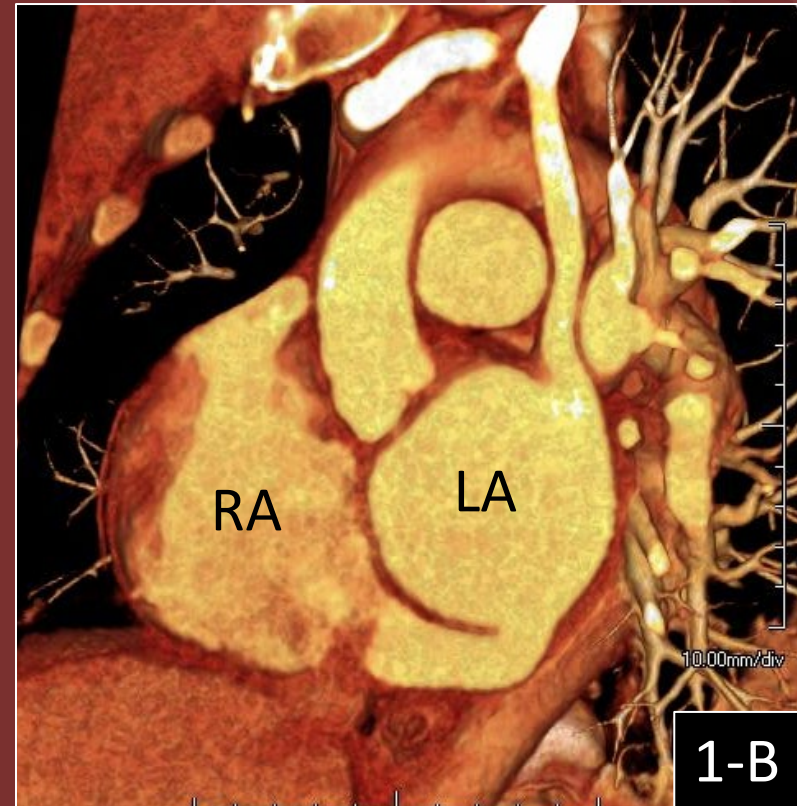
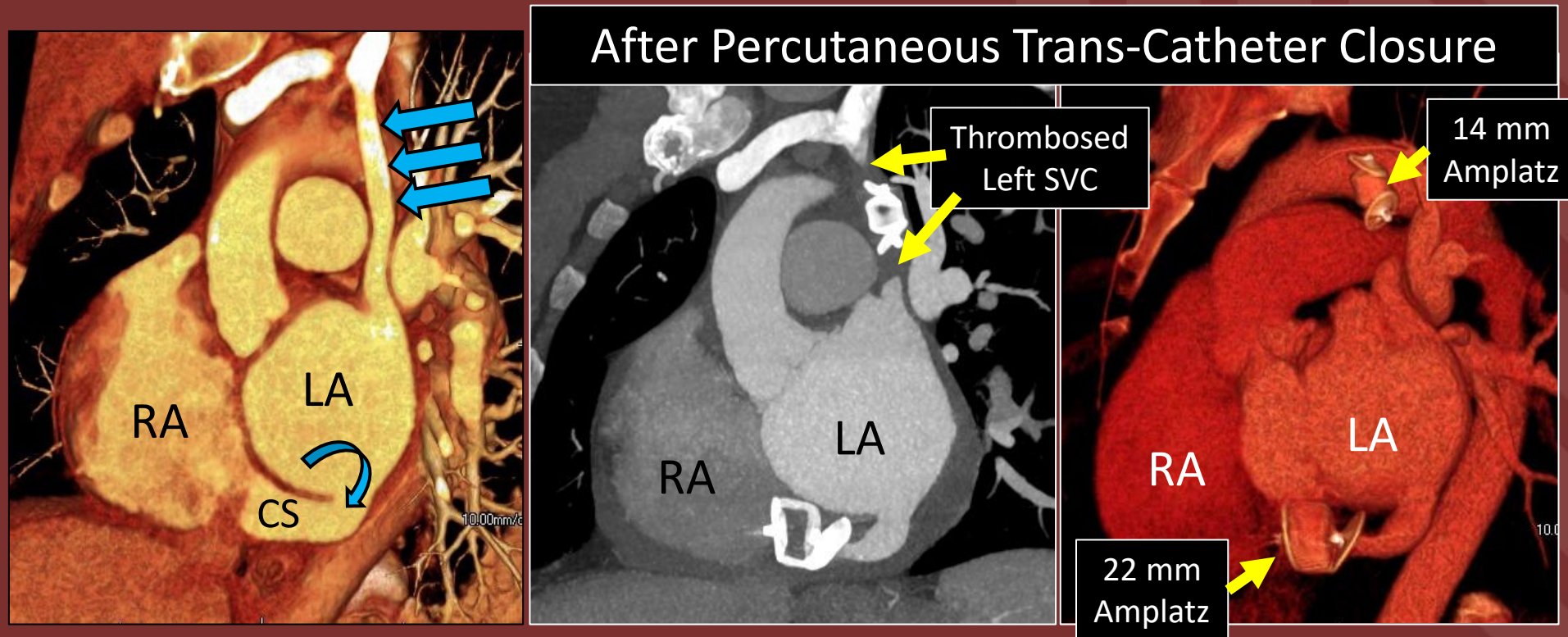


Figure 1: Cardiac CTA – Oblique sagittal, A - MPR, B – Slab volume rendering.
LA: left atrium, RA: right atrium.

Diagnosis:

Persistent left SVC draining into the left atrium (straight arrows), with unroofed coronary sinus (CS) (curved arrow).



Asmaa Ahmed, MD, Muhammad U. Aziz, MD, Padma Manapragada, MD, Mostafa Abozeed, MD, Satinder Singh, MD, University of Alabama at Birmingham