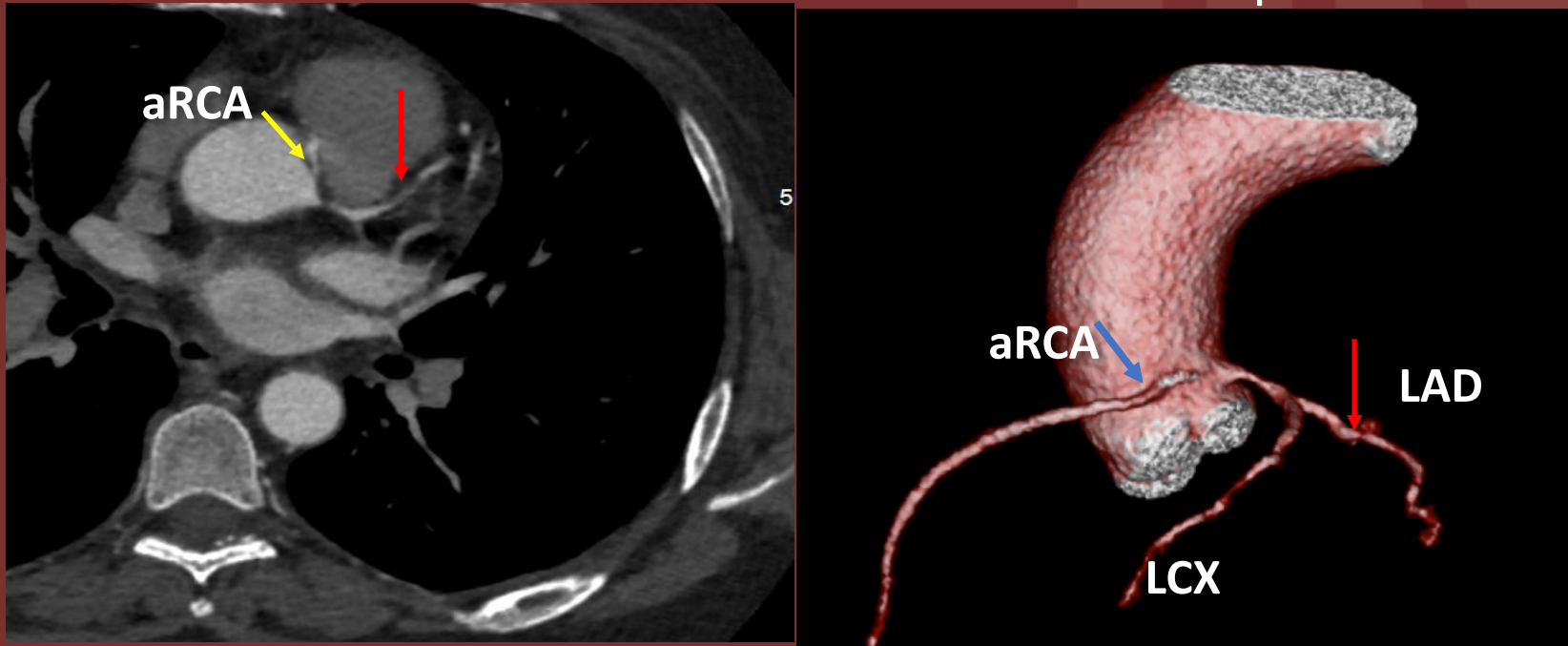


The 50th Anniversary

Fantastic Cases In Cardiovascular Imaging. Case 19

History: 57-year-old female with hypertension and type II diabetes mellites who comes with chest pain.



Left: CT angiogram showing anomalous origin of the right coronary artery (aRCA) from the left coronary cusp (yellow arrow)

Right: ostial stenosis of the anomalous RCA (blue arrow) and 70% stenosis of the mid left anterior descending coronary artery (red arrow)

Diagnosis: Anomalous origin of right coronary artery with multivessel obstructive coronary artery disease and coronary calcium score of zero.

Multivessel obstructive coronary artery disease (CAD) with coronary calcium score of zero is rare, and suspicion of obstructive CAD should be high in patients with typical anginal symptoms. Our patient received bypass to the right coronary artery using saphenous vein graft and to the left anterior descending artery using left internal mammary artery.

Author(s): Saif El Nawaa, MD, Mohamed Elmassry, MD ; Pooja Sethi, MD

Institution: Texas Tech University Health Science Center at Lubbock