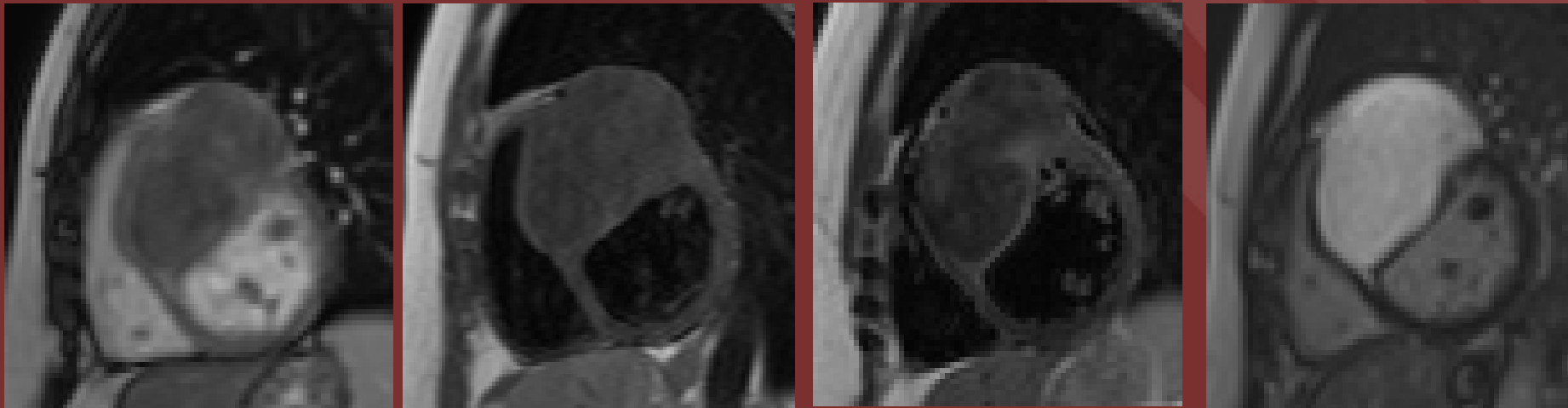


The 50th Anniversary  
Fantastic Cases In Cardiovascular Imaging. Case 15  
History: 36 yo F with dyspnea and abnormal TTE



A

B

C

D

Cardiac MR Short Axis Views

(A) SSFP

(B) T1 Weighted

(C) T2 Weighted

(D) Post Contrast

Diagnosis: Cardiac Fibroma, confirmed on pathology

**Cardiac Fibromas are rare and benign tumors which are seen in young adults. T1 weighted MR demonstrates isointense signal and T2 weighted MR demonstrates low intensity signal. After IV contrast administration, they demonstrate uniform diffuse hyperenhancement.**

**Beatrice C. Panjwani, DO; Matthew Pavlica, MS4; Amar Shah, MD, and  
Nikhil Goyal, MD**

**Northwell Health System**