

The 50th Anniversary
Fantastic Cases In Cardiovascular Imaging. Case 14

History: 42-year-old woman with abnormal echo

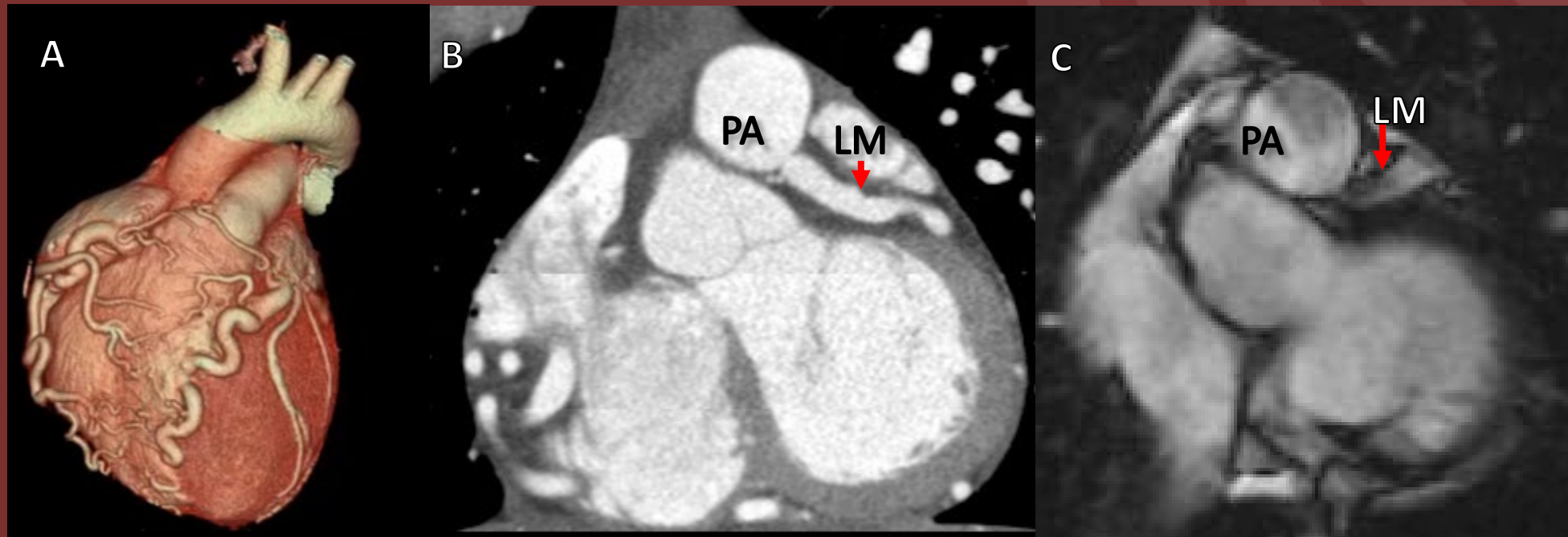


Figure: A. 3D volume rendering from cardiac CTA demonstrates dilated and tortuous RCA and LCA with inter-coronary collaterals. B. Oblique coronal reformat reveals left main (LM) coronary originating from main pulmonary artery (PA) (arrow). C. Oblique coronal balanced SSFP cine shows retrograde flow from LM to main PA (arrow)

**Diagnosis: Adult presentation of Anomalous Left Coronary
from the Pulmonary Artery (ALCAPA) syndrome**

Survival is possible when there are extensive collaterals and a large dominant RCA as well as a restrictive opening between the anomalous LM and the MPA.

Patients are asymptomatic despite subclinical myocardial ischemia.

