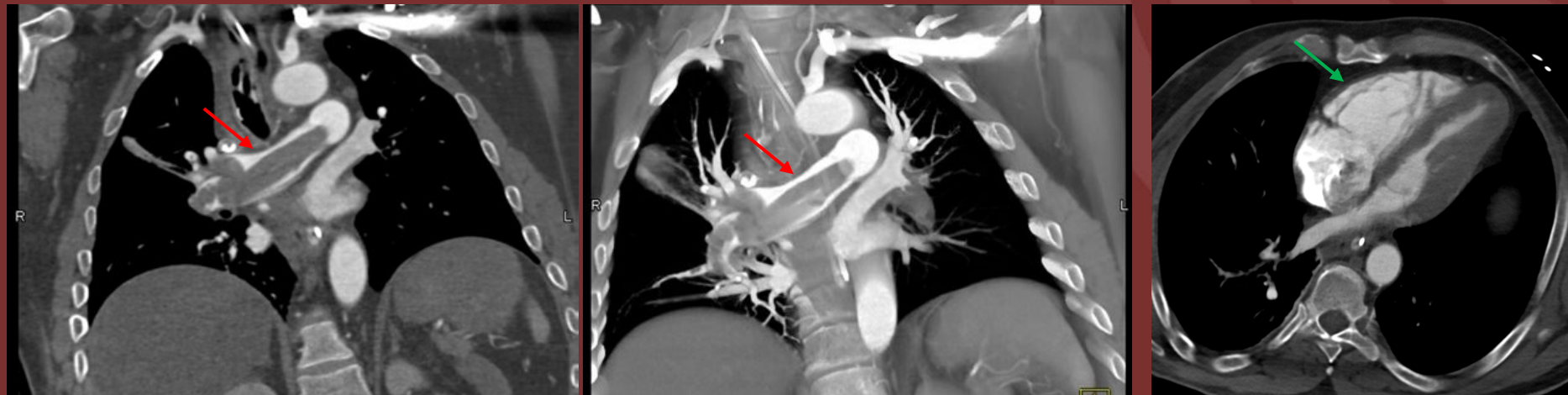


The 50th Anniversary

Fantastic Cases In Cardiovascular Imaging. Case 12

History: 58-year-old male with history of osteomyelitis and chronic leg wounds, presented with acute chest pain.



A

B

C

Figure(s): CTA chest coronal view (A) and MIPS reconstruction (B) demonstrate large filling defect in main pulmonary artery extending to the right pulmonary artery (red arrows) consistent with saddle pulmonary embolism. CTA axial view (C) shows right heart strain (green arrow)

Diagnosis: Saddle Pulmonary Embolism.

Large saddle pulmonary embolism can result in right heart strain requiring immediate clinical attention.

Abdullah Al Khalifah MD, Stefan Zimmerman MD, Elliot Fishman MD

Johns Hopkins Medicine – Department of Radiology