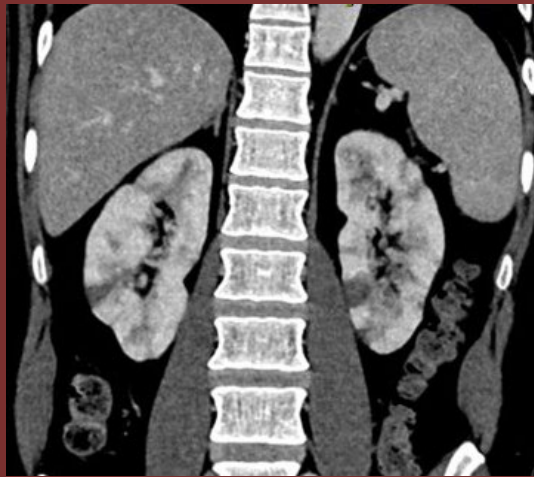


The 50th Anniversary

Fantastic Cases In Cardiovascular Imaging. Case 11

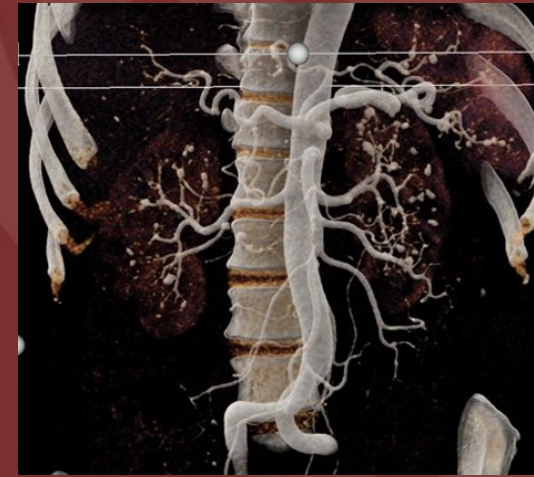
History: 44-year-old male with severe abdominal pain.



A



B



C

Figure(s): Coronal CT (A) shows multiple areas of wedge-shaped renal infarcts. MIPS (B) and Cinematic Rendering (C) show multiple arterial outpouching consistent with microaneurysms in kidneys, spleen, and liver.

**Diagnosis: Polyarteritis Nodosa.**

PAN results in multifocal renal microaneurysms and infarcts.

Abdullah Al Khalifah MD, Stefan Zimmerman MD, Elliot Fishman MD  
Johns Hopkins Medicine – Department of Radiology